

DC-DC Power Converters

Convert 48VDC to 5VDC, 48VDC to 9VDC, 48VDC to 12VDC, 12VDC to 9VDC, 12VDC to 5VDC

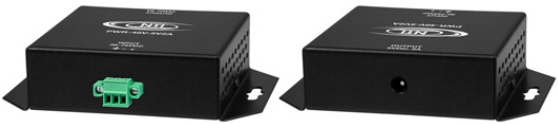
External 48VDC to +5VDC, 1A Power Converter



PWR-48V-5V1A

- External DC-DC converter.
- Use the power converter to install NTI products in a Telecom environment.
- Accepts 36~72VDC (48 VDC nominal). Accepts positive or negative polarity.
- Outputs +5VDC and can handle 1A load.
- 3-pole detachable screw terminal for connecting 48V input.
- 2.1x5.5mm male DC power jack.
- Dimensions WxDxH (in): 1.63x2.13x1.08
- Includes a 3-foot female-to-female DC power cable.
- MTBF: 148,381 hrs

External 48VDC to +5VDC, 2A Power Converter



PWR-48V-5V2A

- External DC-DC converter.
- Use the power converter to install NTI products in a Telecom environment.
- Accepts 36~72VDC (48 VDC nominal). Accepts positive or negative polarity.
- Outputs +5VDC and can handle 2A load.
- 3-pole detachable screw terminal for connecting 48V input.
- 2.1x5.5mm male DC power jack.
- Dimensions WxDxH (in): 3.18x3.09x1.08
- Includes a 3-foot female-to-female DC power cable.
- MTBF: 120,636 hrs

External 48VDC to +5VDC, 4A Power Converter



PWR-48V-5V4A

- External DC-DC converter.
- Use the power converter to install NTI products in a Telecom environment.
- Accepts 18~72VDC (48 VDC nominal). Accepts positive or negative polarity.
- Outputs +5VDC and can handle 4A load.
- 3-pole detachable screw terminal for connecting 48V input.
- 2.1x5.5mm male DC power jack.
- Dimensions WxDxH (in): 3.18x3.09x1.08
- Includes a 3-foot female-to-female DC power cable.
- MTBF: 186,911 hrs

External 48VDC to +9VDC, 0.6A Power Converter



PWR-48V-9V0-6A

- External DC-DC converter.
- Use the power converter to install NTI products in a Telecom environment.
- Accepts 36~72VDC (48 VDC nominal). Accepts positive or negative polarity.
- Outputs +9VDC and can handle 0.6A load.
- 3-pole detachable screw terminal for connecting 48V input.
- 2.1x5.5mm male DC power jack.
- Dimensions WxDxH (in): 3.18x3.09x1.08
- Includes a 3-foot female-to-female DC power cable.
- MTBF: 277,414 hrs

External 48VDC to +12VDC, 1.6A Power Converter



PWR-48V-12V1-6A

- External DC-DC converter.
- Use the power converter to install NTI products in a Telecom environment.
- Accepts 18~72VDC (48 VDC nominal). Accepts positive or negative polarity.
- Outputs +12VDC and can handle 1.6A load.
- 3-pole detachable screw terminal for connecting 48V input.
- 2.1x5.5mm male DC power jack.
- Dimensions WxDxH (in): 3.18x3.09x1.08
- Includes a 3-foot female-to-female DC power cable.
- MTBF: 167,854 hrs

DC-DC Power Converters

Convert 48VDC to 5VDC, 48VDC to 9VDC, 48VDC to 12VDC, 12VDC to 9VDC, 12VDC to 5VDC

External 48VDC to +12VDC, 1.6A Power Converter, Low Temperature Environments



PWR-48V-12V1-6A-LT

- External DC-DC converter.
- For use in low temperature environments.
- Use the power converter to install NTI products in a Telecom environment.
- Accepts 18~72VDC (48 VDC nominal). Accepts positive or negative polarity.
- Outputs +12VDC and can handle 1.6A load.
- 3-pole detachable screw terminal for connecting 48V input.
- 2.1x5.5mm male DC power jack.
- Dimensions WxDxH (in): 3.18x3.09x1.08
- Operating temperature: -40°F to 158°F (-40°C to 70°C).
- Includes a 3-foot female-to-female DC power cable.
- MTBF: 167,854 hrs

External 12VDC to +9VDC, 0.6A Power Converter



PWR-12V-9V0-6A

- External DC-DC converter.
- Accepts 9~18VDC (12VDC nominal). Accepts positive or negative polarity.
- Outputs +9VDC and can handle 0.6A load.
- 3-pole detachable screw terminal for connecting 12V input.
- 2.1x5.5mm male DC power jack.
- Dimensions WxDxH (in): 3.18x3.09x1.08
- Includes a 3-foot female-to-female DC power cable.
- MTBF: 259,929 hrs

External 12VDC to +5VDC, 1.5A Power Converter



PWR-12V-5V1-5A

- External DC-DC converter.
- Accepts 9~18VDC (12VDC nominal). Accepts positive or negative polarity.
- Outputs +5VDC and can handle 1.5A load.
- 3-pole detachable screw terminal for connecting 12V input.
- 2.1x5.5mm male DC power jack.
- Dimensions WxDxH (in): 1.63x2.13x1.08
- Includes a 3-foot female-to-female DC power cable.

Internal 48VDC to ±5VDC, 10A Power Converter



- Optional internal DC-DC converter.
- Add the power converter option to install NTI products in a Telecom environment.
- Accepts 36~72VDC (48 VDC nominal). Accepts positive or negative polarity.
- Outputs ±5VDC and each converter can handle 10A load.
- Two 3-pole detachable screw terminals for connecting 48V inputs.
- MTBF: 62,431 hrs
- Add -48V5V10A2 to NTI part number.

Internal 48VDC to +5VDC, 2A Power Converter



- Optional internal DC-DC converter.
- Add the power converter option to install NTI products in a Telecom environment.

- Accepts 36~72VDC (48 VDC nominal), positive or negative polarity.
- Outputs +5VDC and can handle 2A load.
- 3-pole detachable screw terminal for connecting 48V input.
- MTBF: 120,636 hrs
- Add -48V5V2A to NTI part number.

Internal 48VDC to +5VDC, 10A Power Converter



- Optional internal DC-DC converter.
- Add the power converter option to install NTI products in a Telecom environment.

- Accepts 36~72VDC (48 VDC nominal), positive or negative polarity.
- Outputs +5VDC and can handle 10A load.
- 3-pole detachable screw terminal for connecting 48V input.
- MTBF: 124,862 hrs
- Add -48V5V10A to NTI part number.