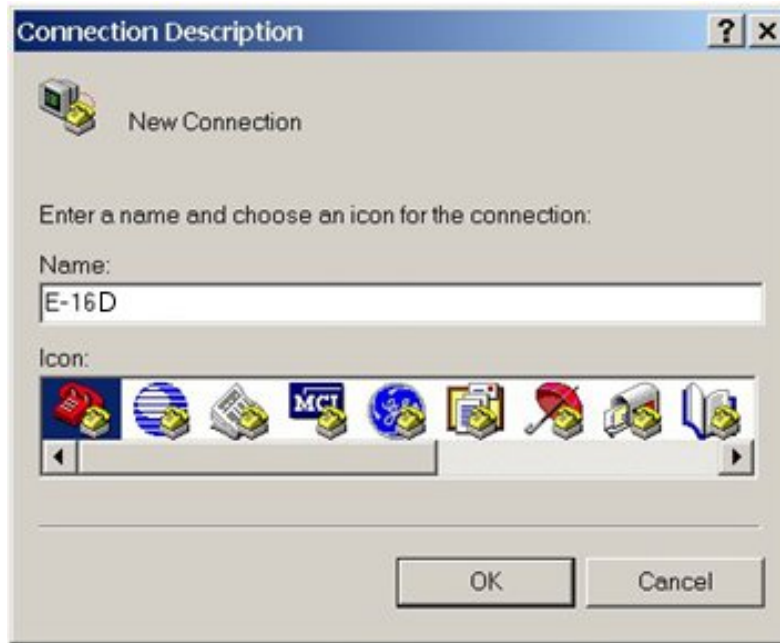
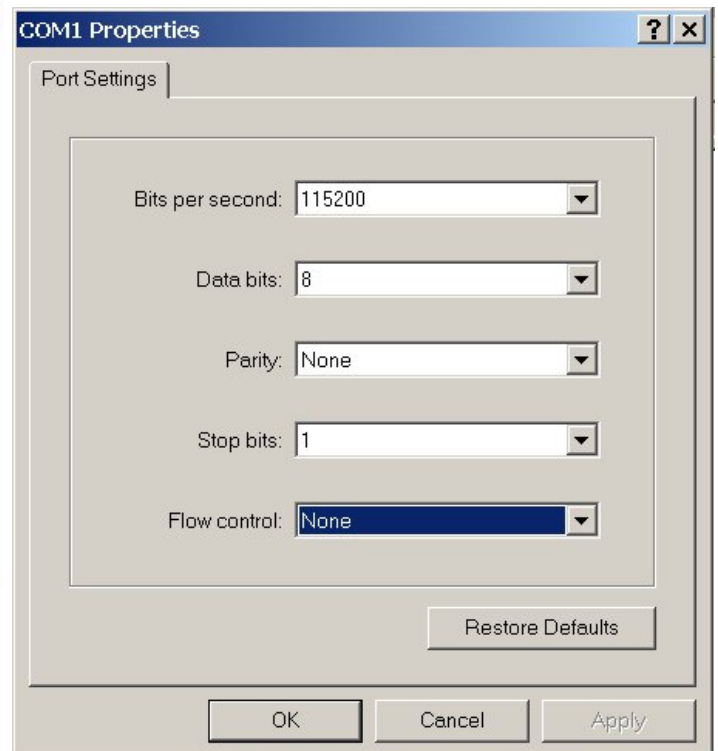


E-16D AC VOLTAGE AND INTERNAL HUMIDITY CALIBRATION

1. Record the humidity value from a device in the vicinity of the ENVIROMUX.
2. Connect a PC with a terminal program to either the USB "CONSOLE" port or "RS232" port. (For instruction regarding this connection, see "Terminal Connection for RS232" in the user manual).
3. Open a terminal program and assign a name to the new connection.



4. Your connection will be through a "COM" port on the PC. Configure the connection settings as shown below.



5. You will be presented with a login screen. Enter Username "root" and Password "nti" (all lowercase letters).

Server Environment Monitoring System

Username :root_____

Password :***_____

Enter login credentials.
Press <Enter> to move between fields.

This screenshot shows a terminal window titled "Server Environment Monitoring System". It contains a login prompt with two input fields: "Username :root" and "Password :***". Below the input fields, a black bar highlights the instruction "Enter login credentials. Press <Enter> to move between fields."

6. The main menu will be presented.

Main Menu

1. Monitoring
2. System Configuration
3. Enterprise Configuration
4. Network Configuration
5. User Configuration
6. Security Configuration
7. Event & Data Logs
8. System Information
9. Reboot

[Logout]

Monitor and configure sensors, power outlets, and IP devices.
Press <Tab> to move between the menu and logout button.
Press <Enter> to select highlighted item.

This screenshot shows a terminal window titled "Main Menu". It displays a numbered list of menu options: 1. Monitoring, 2. System Configuration, 3. Enterprise Configuration, 4. Network Configuration, 5. User Configuration, 6. Security Configuration, 7. Event & Data Logs, 8. System Information, and 9. Reboot. The first option, "1. Monitoring", is highlighted with a black bar. Below the list is the "[Logout]" option. At the bottom, a black bar highlights the instruction: "Monitor and configure sensors, power outlets, and IP devices. Press <Tab> to move between the menu and logout button. Press <Enter> to select highlighted item."

11. You will then be prompted to enter a humidity value. Type the humidity value you recorded in step 1 and press <Enter>.

```
# calibrate
1

Calibrating Voltage Monitors
Found expected values: 0x10c 0x000
Found current values: 0x107 0x000
Done

Current calibration offset: 1500.079590

Introduce Humidity value: 20
You introduced: 20.000000
Current reading: 20.968134
Calibration offset: 1487.608765
#
```

12. Calibration is now complete. Type "exit" and press <Enter> to return to the Main Menu.

```
# calibrate
1

Calibrating Voltage Monitors
Found expected values: 0x10c 0x000
Found current values: 0x107 0x000
Done

Current calibration offset: 1500.079590

Introduce Humidity value: 20
You introduced: 20.000000
Current reading: 20.968134
Calibration offset: 1487.608765
# exit
```