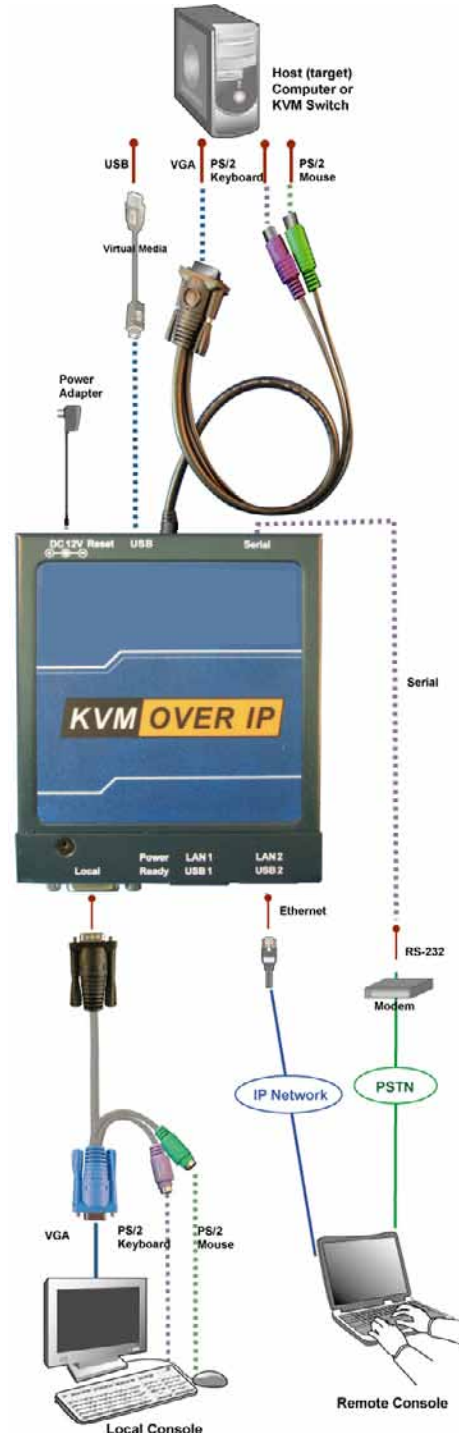


INTERMUX-KVMUIP



1. Package Checklist

The IP-KVM package consists of the followings items:

- ✓ The IP-KVM unit
- ✓ CD-ROM (software utilities and User's manual)
- ✓ Quick Start Guide
- ✓ DC power supply adapter
- ✓ 3-in-1 Integrated Adapting Local Cable
- ✓ USB A-mini cable
- ✓ Serial Cable (RJ45 to DB9F)
- ✓ Rack mounting kit (Brackets and screws)
- ✓ Footpads set

2. Hardware Installation

Installation steps: (PS/2 Application)

1. Power down your computer and IP-KVM.
2. Connect the VGA and PS/2 connectors of the attached 3-in-1 Integrated Host Cable to the **Host** computer.
3. Connect the 3-in-1 Integrated Adapting Cable to the **Local** DB-15 connector of IP-KVM
4. Connect the monitor to the Adapting Cable.
5. Connect the keyboard to the Adapting Cable.
6. Connect the mouse to the Adapting Cable.
7. (Optional) Connect the USB connectors of USB A-mini cable to the host computer and the IP-KVM module while for remote mass storage control.
8. Connect one end of Ethernet cable to LAN1 or LAN 2 jack of IP-KVM, and the other end to the Remote Console computer.

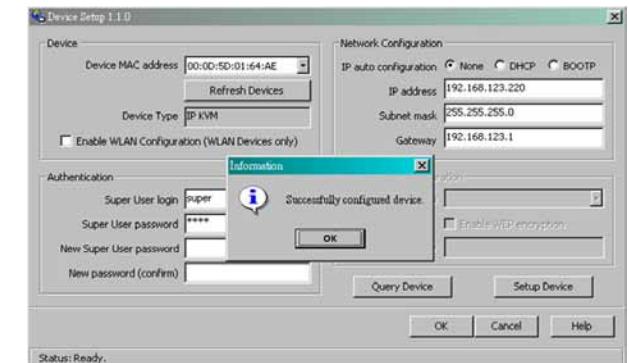
3. Network Configuration

Default User Name: super
 Default Password: pass
 DHCP: Disable
 Default IP address: 192.168.0.70
 Default Net Mask: 255.255.255.0

There is a Network Setup Software utility (**PSetup**) for setting up the network configuration (IP address, Subnet mask, DHCP, etc). It is useful when you want to change the network settings or you can not access to the unit due to not knowing the network settings of the unit. In this case, you can view or change the settings via this utility.

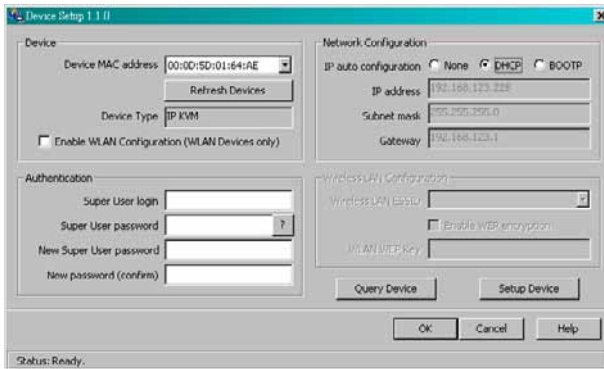
Set up a fixed IP:

1. Using **PSetup** to look for IP-KVM.
 - a) Click **Refresh Devices** button to detect connected devices.
 - b) Select MAC address of the IP-KVM in "Device MAC address" box. You can find the MAC address labeled on the bottom side of the IP-KVM unit.
 - c) Click **Query Device** to find the IP configuration on the right pane.
2. Setup "IP auto configuration" as "**None**"; setup IP address and Subnet mask
3. Enter Super user login and password for Authentication (default : super/pass)
4. Click **Setup Device**. If super login was authenticated, it'll show "Successfully configured device". Otherwise it'll show "Permission Denied".



Get an IP from DHCP server:

1. Setup "IP auto configuration" as "**DHCP**"; setup IP address and Subnet mask
2. Enter Super user login and password for Authentication (default : super/pass)
3. Click **Setup Device**. If super login was authenticated, it'll show "Successfully configured device".
4. Using **PSetup** to look for IP address.
 - a) Click **Refresh Devices** button to detect connected devices.
 - b) Select MAC address of the IP-KVM in "Device MAC address" box. You can find the MAC address labeled on the bottom side of the IP-KVM unit. MAC address is detected as connection from computer and IP-KVM is valid through USB or network.
 - c) Click **Query Device** to find the IP configuration on the right pane.



4. Using Web Browser

By knowing the IP address, now you can access to the IP-KVM unit with a web browser. After passing the authentication of user name and password, you can access to the IP-KVM web server with web browser.

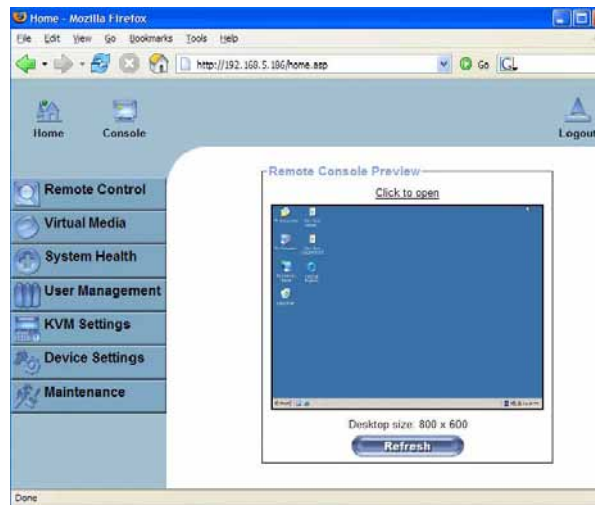
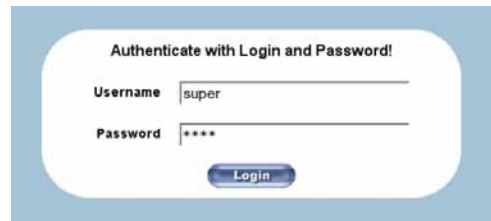
For instance, type the following in the URL field of your browser when establishing an unsecured connection:

http://<IP address of IP-KVM>

When using a secure connection, type in:

https://<IP address of IP-KVM>

This will lead you to the IP-KVM login page as shown below.



5. Opening and using Remote Console

1. To open the KVM console either click on the icon **Console** or **Remote Control > KVM Console** of the menu entry on the left or **Click to open** of the console picture on the right.
2. Starting the Remote Console opens an additional window. It displays the screen content of your host system. The Remote Console will behave exactly in the same way as if you were sitting locally in front of the screen of your remote system.
3. The upper part of the Remote Console window contains a control bar.
4. To open the Options menu, click on the button "Options".

