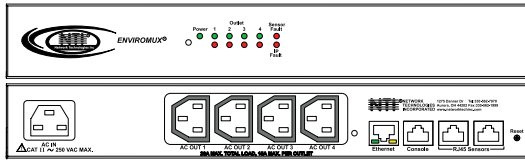
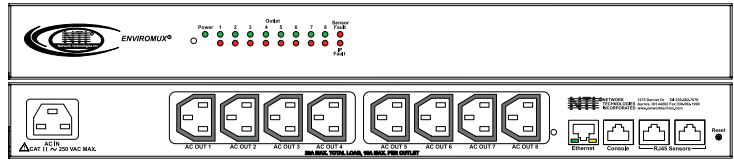


SECURE REMOTE POWER CONTROL UNIT: 4- AND 8-PORT

Securely control power on/off/reboot to up to eight devices over IP



IPDU-S4 (Front and Back)



IPDU-S8 (Front and Back)

• Linux Inside

Features & Applications

The ENVIROMUX® Secure Remote Power Control Unit allows you to remotely reboot and control power (on/off) to up to eight servers or other powered devices from any location via secure web interface, RS232, SSH, or Telnet.

- Supports Power On or Off in addition to Reboot.
- Three operating modes for power:
 - Manual reboot — select the outlet and turn the power on or off.
 - Scheduled reboot — set a date, time, and duration of the power cycle. Power cycles can also be scheduled as recurring daily, weekly, or monthly.
 - Associated reboot — power on or off a device when a sensor goes out of range of a user-defined threshold, or reboot if an IP device is unresponsive.
- Security: HTTPS, SSHv2, SSLv3, IP Filtering, LDAPv3, AES 256-bit encryption, 16-character username/password authentication, user account restricted access rights.
- Power-up sequencing limits in-rush current.
- Outlets can be individually named (up to 80 characters).
- Operates on a hardened Linux system.
- Monitor (ping) up to 8 IP network devices.
 - Configure the timeout and number of retries to classify a device as unresponsive.
 - Power cycle associated power outlets if devices are not responding.
 - Alerts are sent if devices are not responding.
- Monitor environmental conditions.
 - Supports two sensors, including: temperature, humidity, and water detection.
 - When a sensor goes out of range of a configurable threshold, the system will notify you via email, syslog, LEDs, web page, and network management (SNMP).
 - Powers up or down devices when sensors go out of range of user-defined thresholds.
- Firmware upgradeable “in-field” through console port or Ethernet.

Specifications

Power

- 90 to 250 VAC at 50 to 60 Hz.
- Input Connector: One IEC C20 inlet.
- Output Connectors: IEC C13 outlets.
- Includes line cord and output cord.
- Input current capacity: 20A
- Output current capacity: 15A

RJ45 Sensor Ports

- Two RJ45 modular jacks for connecting NTI temperature, humidity, temperature/humidity, and liquid detection sensors.

Network Interface

- One 10/100 Base-T Ethernet port with RJ45 Ethernet connector.

Console Port

- One female RJ45 port for terminal access.

Regulatory Approvals

- CE, RoHS

Environmental

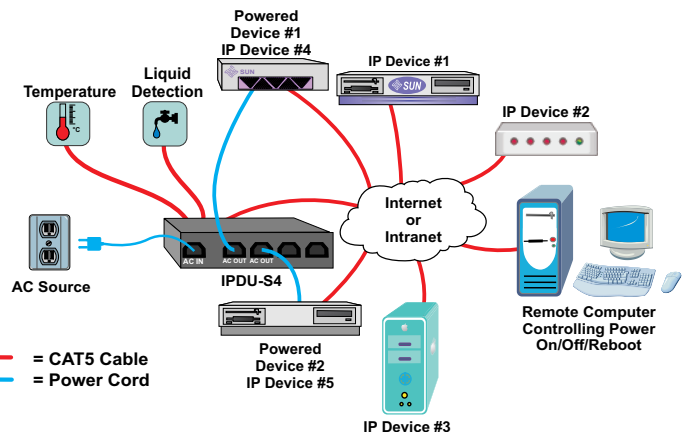
- Operating temperature: 32°F to 122°F (0°C to 50°C).
- Storage temperature: -13°F to 149°F (-25°C to 65°C).
- Operating and Storage Relative Humidity: 0 to 90% non-condensing RH.

Protocols

- HTTPS, SSHv2, SSLv3, LDAPv3, AES 256-bit encryption, SNMPv2c.
- Operates and configures via HTTP/HTTPS web page, Telnet, SSH, or RS232 interface.
- Alerts are sent using email, syslog, and/or SNMP traps when devices are not responding and when a sensor goes out of range of a configurable threshold.
 - Alerts are posted in event log, which is accessible through Web user interface. The log can be downloaded as a tab-delimited plain text file.

Warranty

- Two years



SECURE REMOTE POWER CONTROL UNIT: 4- AND 8-PORT

Securely control power on/off/reboot to up to eight devices over IP

Control Methods

RS232/Telnet/SSH

- Configure, control and monitor over the text-based menu system accessible via RS232, Telnet, and SSH.
- Access is controlled via username/password.
 - System stores encrypted login information.
- Two user levels: User and Administrator.

Web Interface

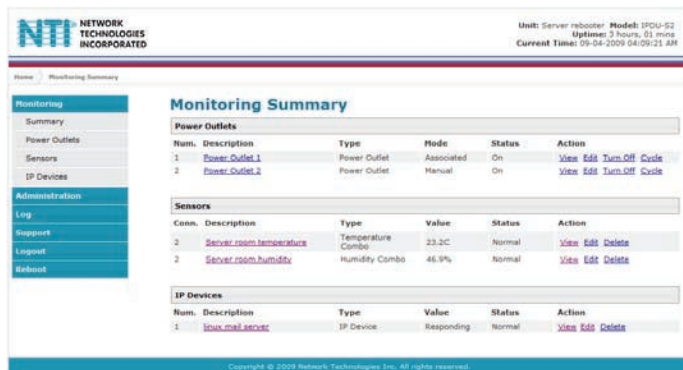
- Configure, control and monitor via HTTP/HTTPS webpage.
- Configure outlet operation settings, sensor thresholds and timing, alarm methods, alert formats, sensor/IP device outlet association, and system data log.
- View power outlet status, sensor values, IP device values, and alert status.
 - All connected power outlets, devices, and sensors can be viewed on one summary page.
 - View, Edit, Turn On/Off, Cycle buttons for each power outlet.
 - View and Edit sensors and IP devices.
- View entries stored in the system logs.
 - Event log records system events such as alerts, user login/logout, failed email messages, etc.
 - Data log records samples of sensor readings. User specifies sampling time period.
 - The log can be downloaded as a tab-delimited plain text file.
- Configure IP information (address, subnet mask, default gateway, DNS, etc.), SMTP settings, SNMP settings, IP filtering, and user administrative settings.
 - Administrator can restrict or grant access from certain IP addresses based on configured filter rules.
- Administrate up to 15 users plus a root administrator.
- Permissions, schedule and alert methods are configurable for each user.

Front Panel LED Indicators

- “POWER” (green) — indicates device is powered.
- “OUTLET” (green / red) — outlet is on or off.
- “SENSOR FAULT” (red) — lights up if a sensor goes out of range of a configurable threshold.
- “IP FAULT” (red) — lights up if an IP device is unresponsive.

Network Operation

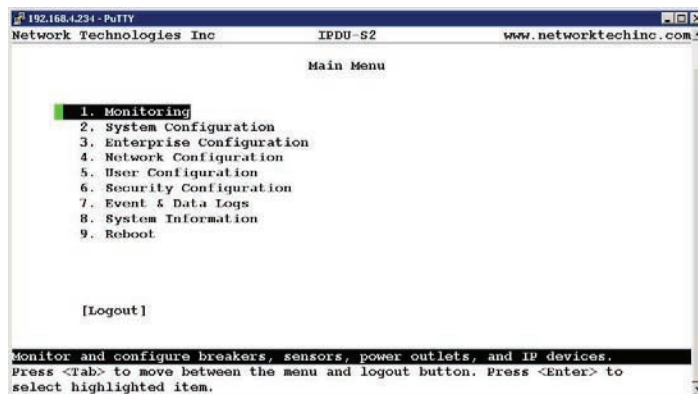
- SNMP support, allowing integration into network management platforms.



Web Interface Screen Shot

Security

- Local DB or LDAP authentication
- TLS/SSL secure communications
- SSH v2
- AES, 3DES/DES, Blowfish, RSA, EDH-RSA, Arcfour Encryptions



Text-Based Menu Interface Screen Shot

Secure Remote Power Control Unit					
NTI Part #	# of Outputs	Input Current Capacity	Output Current Capacity	Desktop Size WxDxH (in)	Rack Size WxDxH (in)
IPDU-S4	4	20A	15A	7x6x3.5	NA
IPDU-S4R	4	20A	15A	13.5x6x1.75 (without supplied rackmount kit)	19x6x1.75 (with supplied rackmount kit)
IPDU-S8	8	20A	15A	17.4x6x1.75 (without supplied rackmount kit)	19x6x1.75 (with supplied rackmount kit)



330.562.1999
Worldwide fax



sales@ntigo.com



www.networktechinc.com

© 2009 NTI
All rights reserved