


- Using the client software in LAN and remotely .

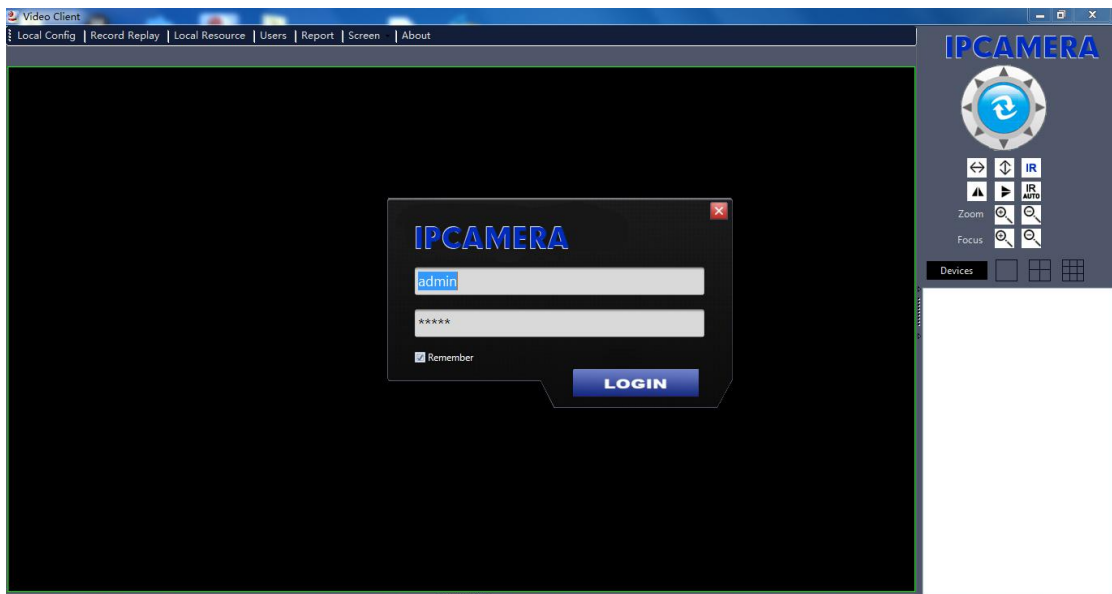
1. Find this file  IPCClient in the CD,install it.After installation,you will find the



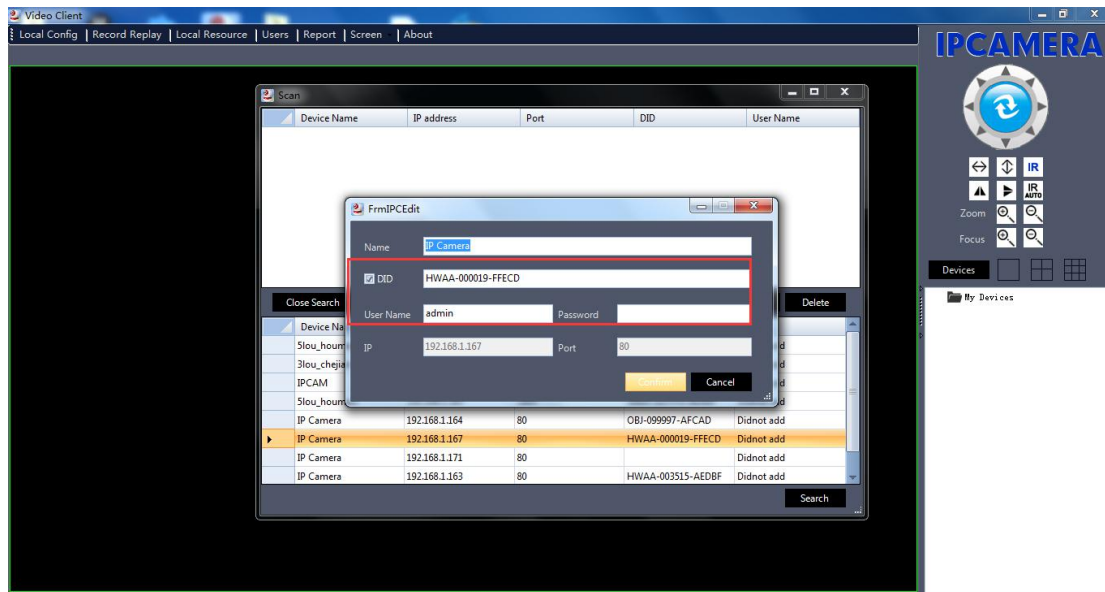
on your desktop.

2. Double click  to run the program,the following operation interface will be shown.

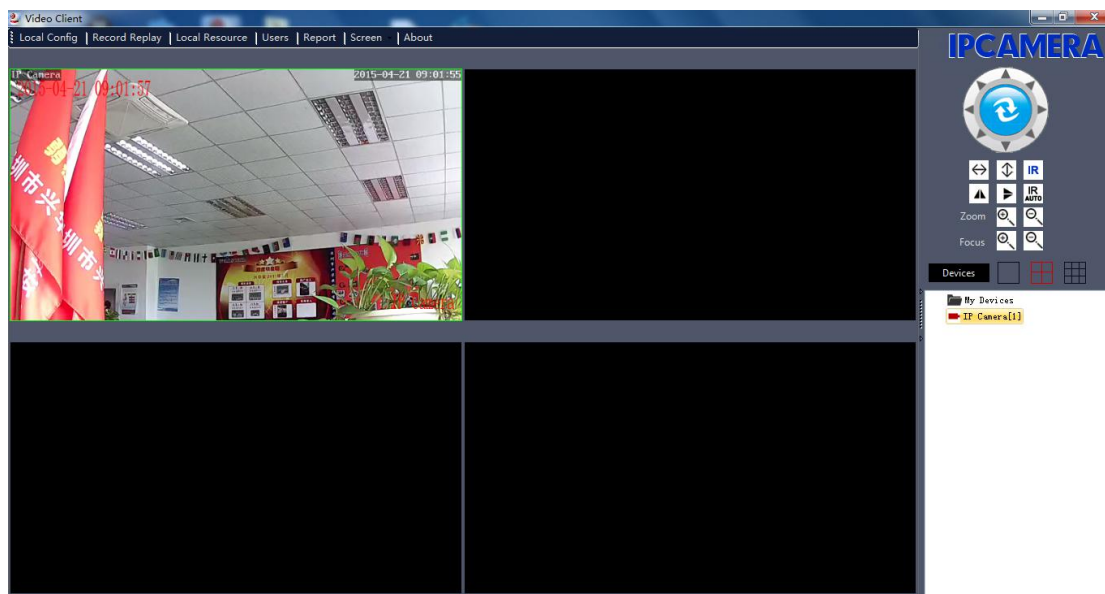
both **User Name** and **Password** are **admin**



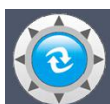
3.Firstly, click "**Device**", one window will pop up. Like following:



4. Then click **search** the cameras in LAN. You will see the camera device name ,IP address, port, and DID.
5. Double click the camera IP address, a new window appears, input username and password, then confirm.
6. Click **sure**, the camera which you just added will show in the device list.
7. At last close the window, click the right button of the camera or double click it to open the video ,then comes the camera video,in the meantime, the exclamation mark turns to be red.



The introduction of the operation interface .



Pan and tilt .



Image inverted.



Auto tilt .



Mirror.



Auto pan.



Zoom function.



IR control for night vision .



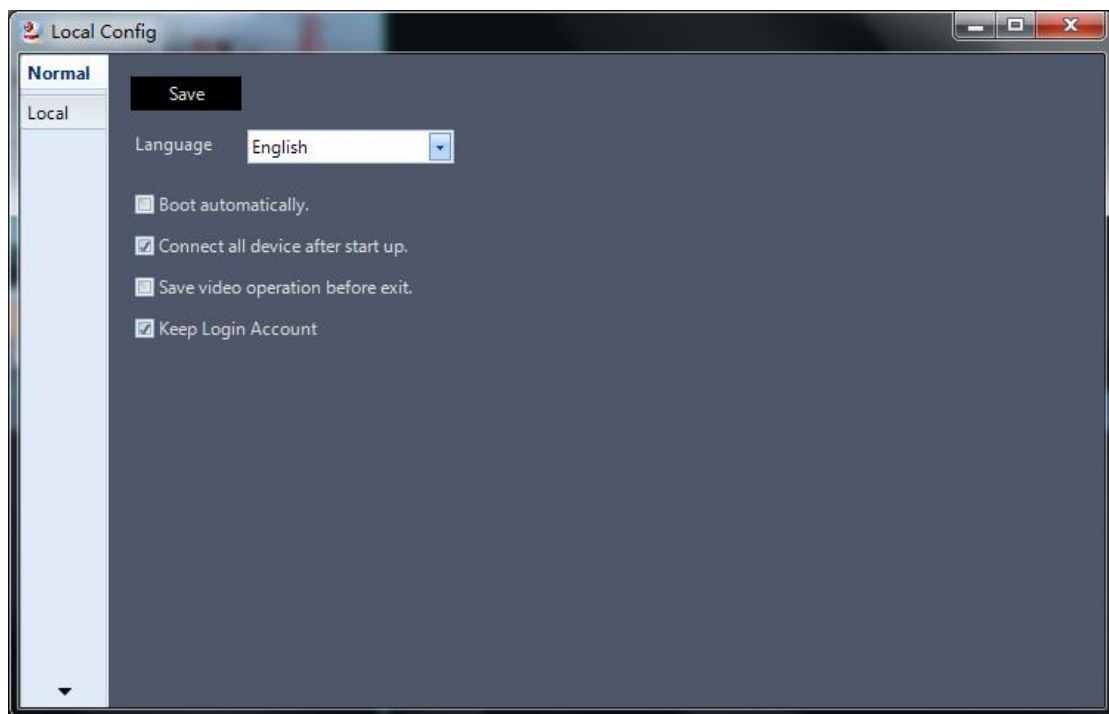
Focus function.



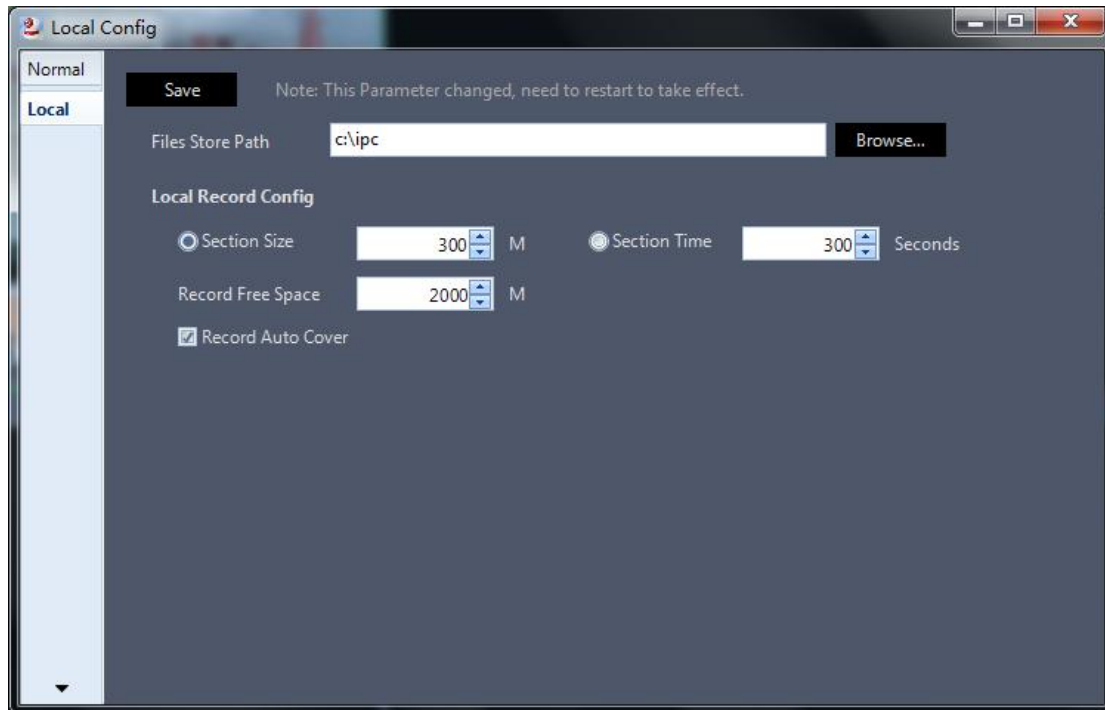
Snapshot\Record\Listen\Speak.

System configuration :

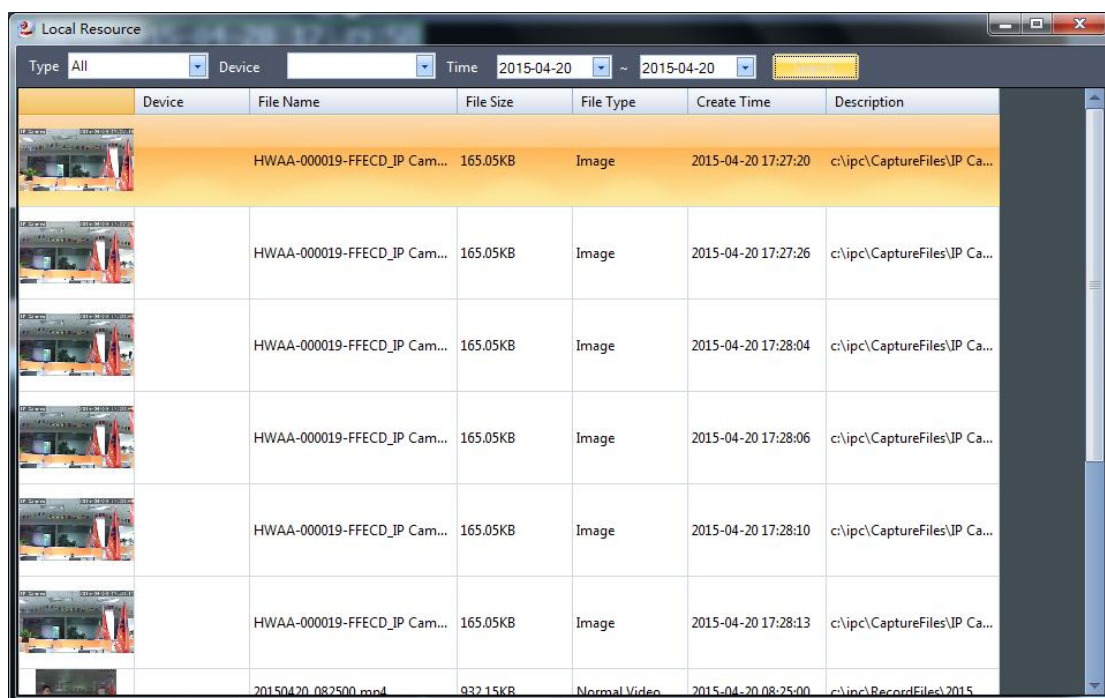
Normal settings



Local saving settings



Local source administration: All the cameras can be found and selected here

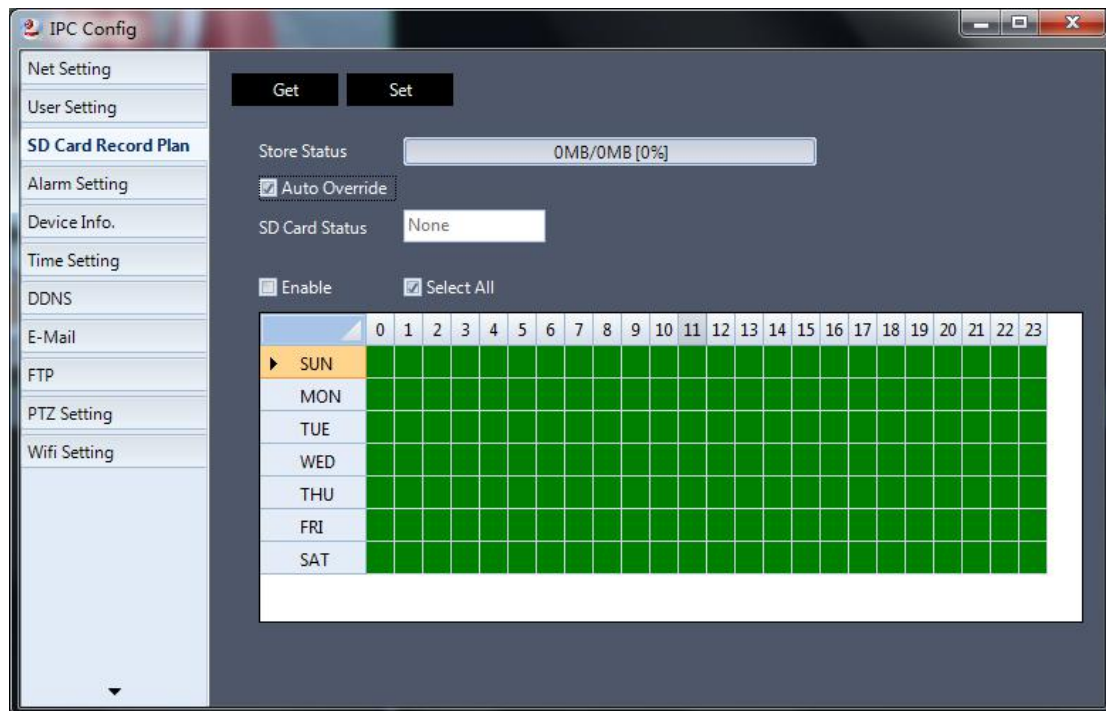


About the SD card video playback

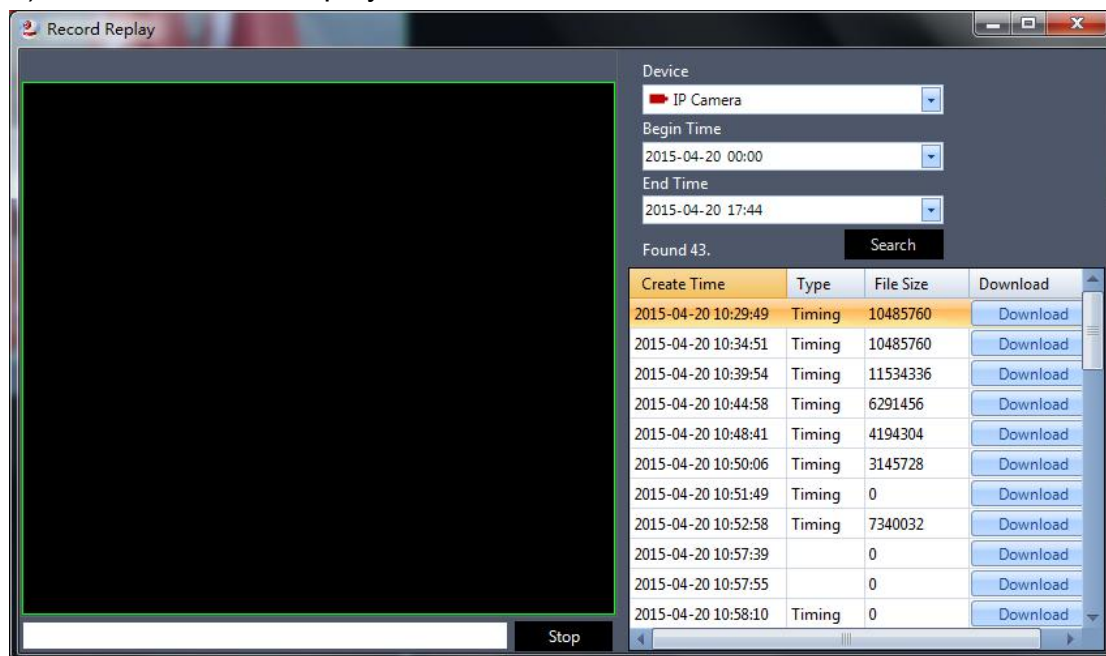
For example

1).choose one image, then click right button, then **go SET UP** , choose **SD card settings** : first , make sure SD card inserted , then **Formatting** it -- select time-- Confirm . If your SD card have not inserted succeed , please

delete this camera on the PC Client software, and reboot the camera , make sure this SD card inserted !!!



2). Go SD Card video playback to check the video files :



User setup :Creat \ Modify \Delete.

Alarm record : Alarm recording settings for all the cameras .

Screen : Multi-screen, see several cameras at the same time .

Note : Double clicking the screen,can enlarge the image.Double clicking again can go back.

And click the right button can go to the **set up** (DDNS, Alarm,Email,FTP...)