

Firmware Upgrade Procedure

Notes :

Please do not power OFF or unplug the network cable from the ST-IPHD-POELC-V4 Transmitter in the process of upgrading.

If you can't open the upgrade file, please try another browser.

Step 1: Prepare to Upgrade

You will need a network cable (CATx) wired to the [TIA/EIA 568B standard](#) and a PC/laptop computer. Download the upgrade file (*st-iphd-poelc.pkg*) from <https://www.networktechinc.com/download/d-hdmi-ip-poe.html>.

Step 2: Change the IP address of the PC/laptop

- 1) Open the *Network and Sharing Center* in the *Control Panel*, and click on the *Connections* link.
- 2) A new window will open showing the details about your internet connection. Click on the **Properties** tab.
- 3) Another window will open showing the items used by your connection. Select **Internet Protocol Version 4 (TCP/ IP v4)**.
- 4) Select **Use the following IP address** and fill the required details:
 - IP address: **192 .168 .1 . 88**
 - Subnet mask: **255 .255 .255 . 0**
 - Default Gateway: **192 .168 .1 . 1**
- 5) Leave the DNS server addresses box blank and click on "OK".

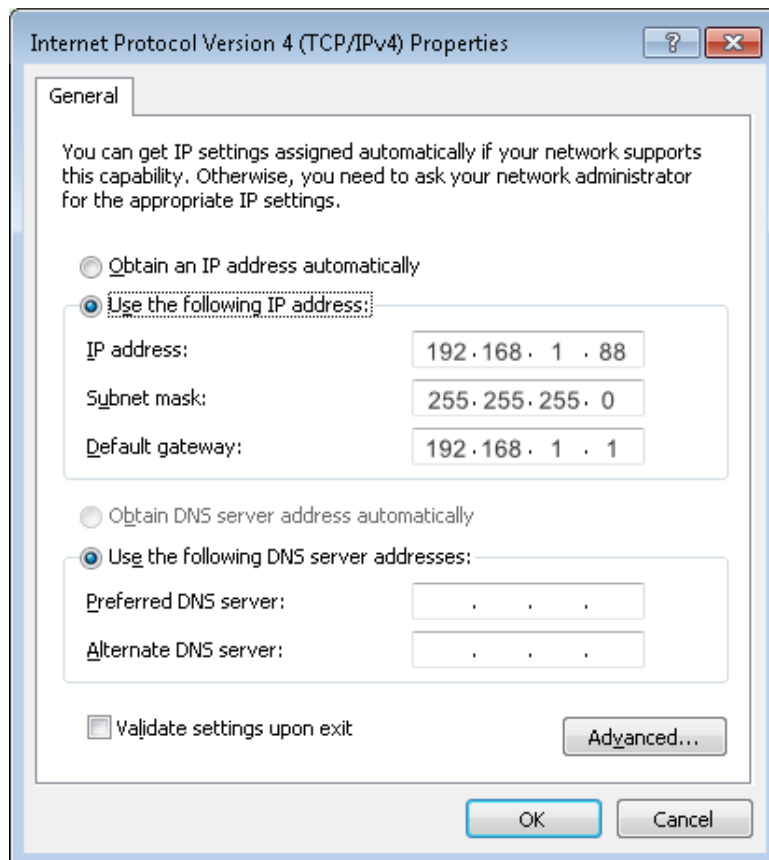
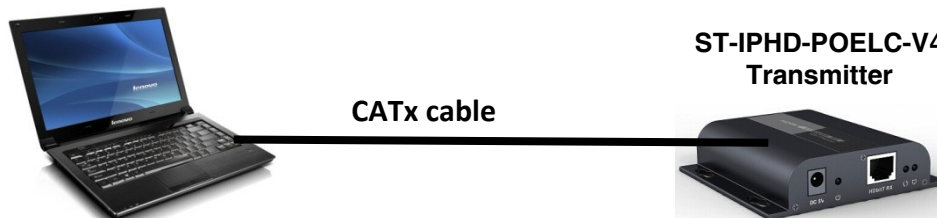


Figure 1- Network settings for firmware upgrade

Step 3: Perform the Firmware Upgrade

- 1) Power ON the Transmitter that needs to be upgraded and connect it to the PC/laptop via a CATx cable.
- 2) Open the browser (Internet Explorer is recommended) and enter the address **192.168.1.210** in the address bar:



- 3) Select the upgrade file (*st-iphd-poelc.pkg*) and click **upgrade** (see image below).
- 4) When the progress bar is finished, you will see the latest version number after refreshing the page. The process is complete. (The whole process takes about 15-30 seconds)

Note: Version number shown below is for reference only



Figure 2- Connection made to extender via computer

Verify version says V5.6.3.10.20220713 after update by refreshing screen.