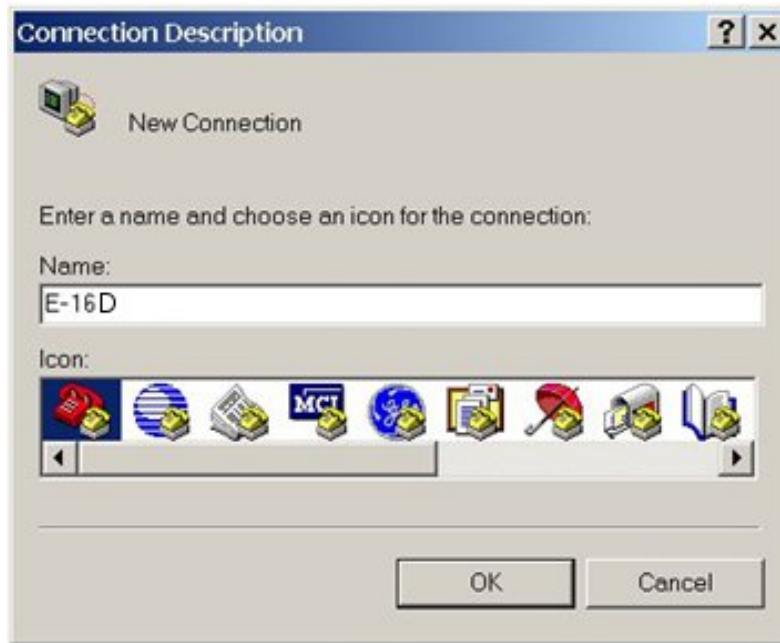
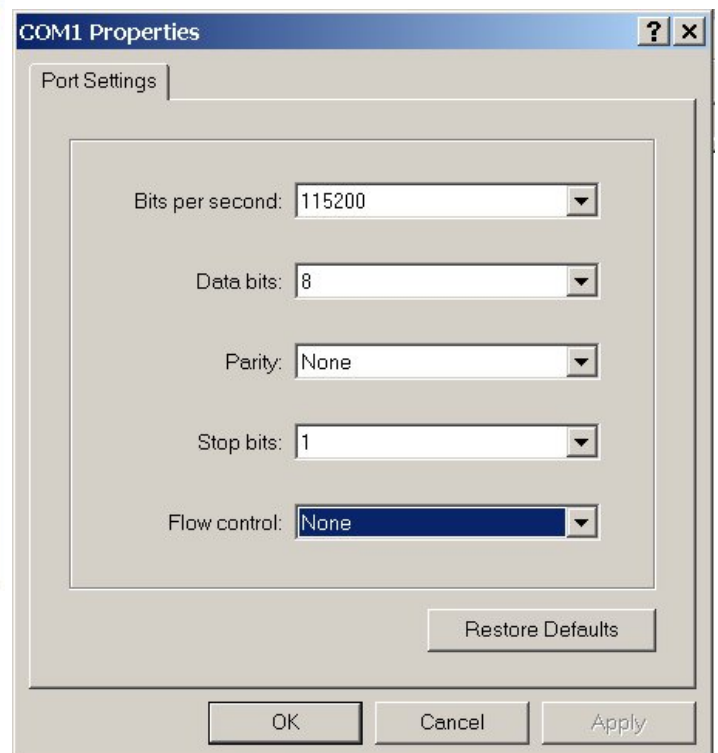


ENVIROMUX-16D AC VOLTAGE AND INTERNAL HUMIDITY CALIBRATION

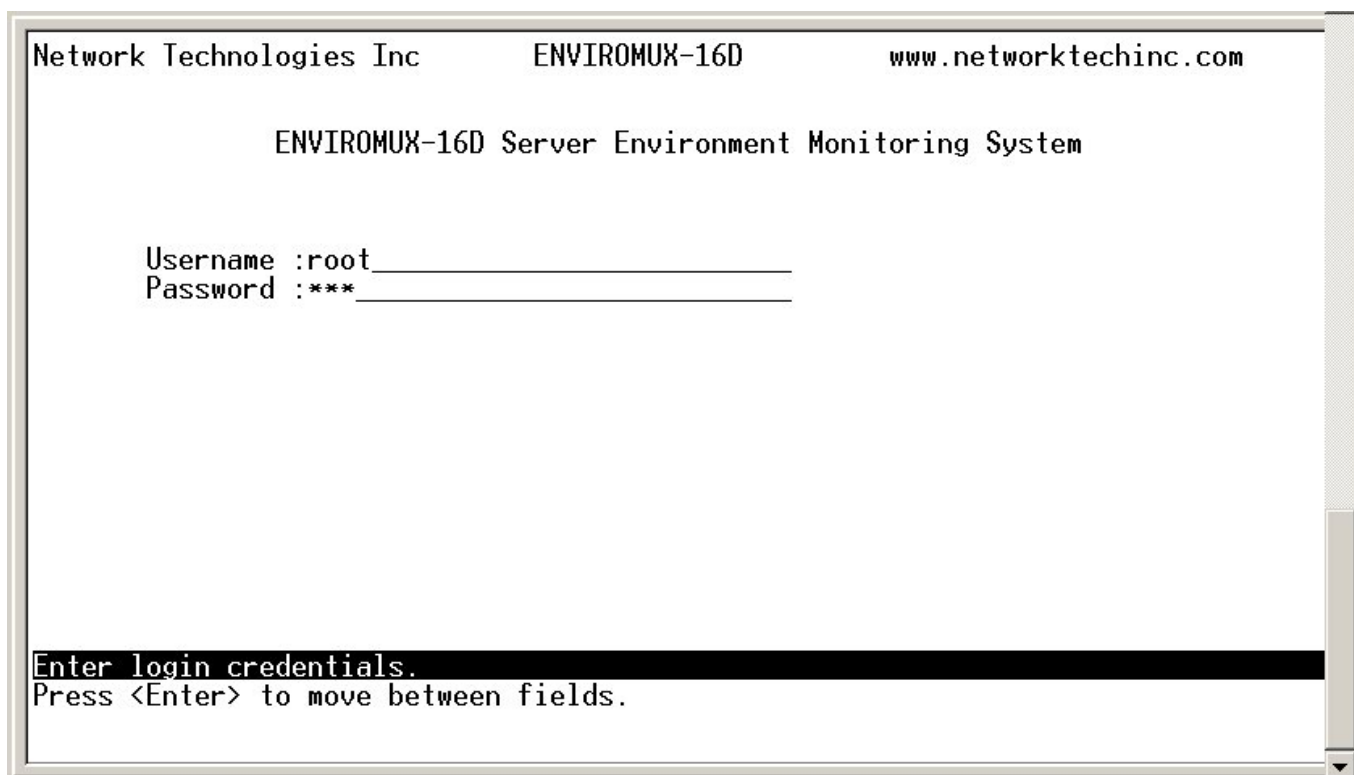
1. Record the humidity value from a device in the vicinity of the ENVIROMUX.
2. Connect a PC with a terminal program to either the USB "CONSOLE" port or "RS232" port. (For instruction regarding this connection, see "Terminal Connection for RS232" in the user manual).
3. Open a terminal program and assign a name to the new connection.



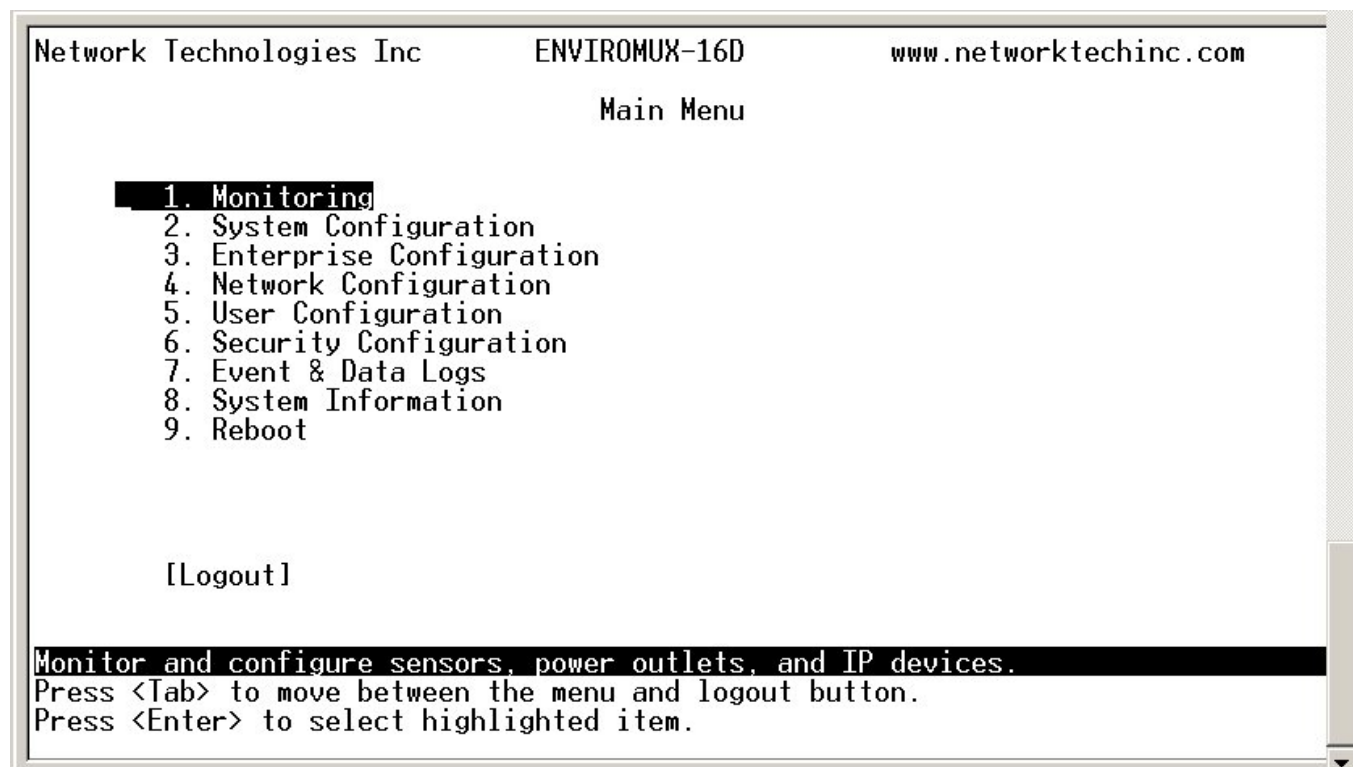
4. Your connection will be through a "COM" port on the PC. Configure the connection settings as shown below.



5. You will be presented with a login screen. Enter Username "root" and Password "nti" (all lowercase letters).



6. The main menu will be presented.



9. You will be presented with a hash tag (#). Type "clear" and press <Enter>.

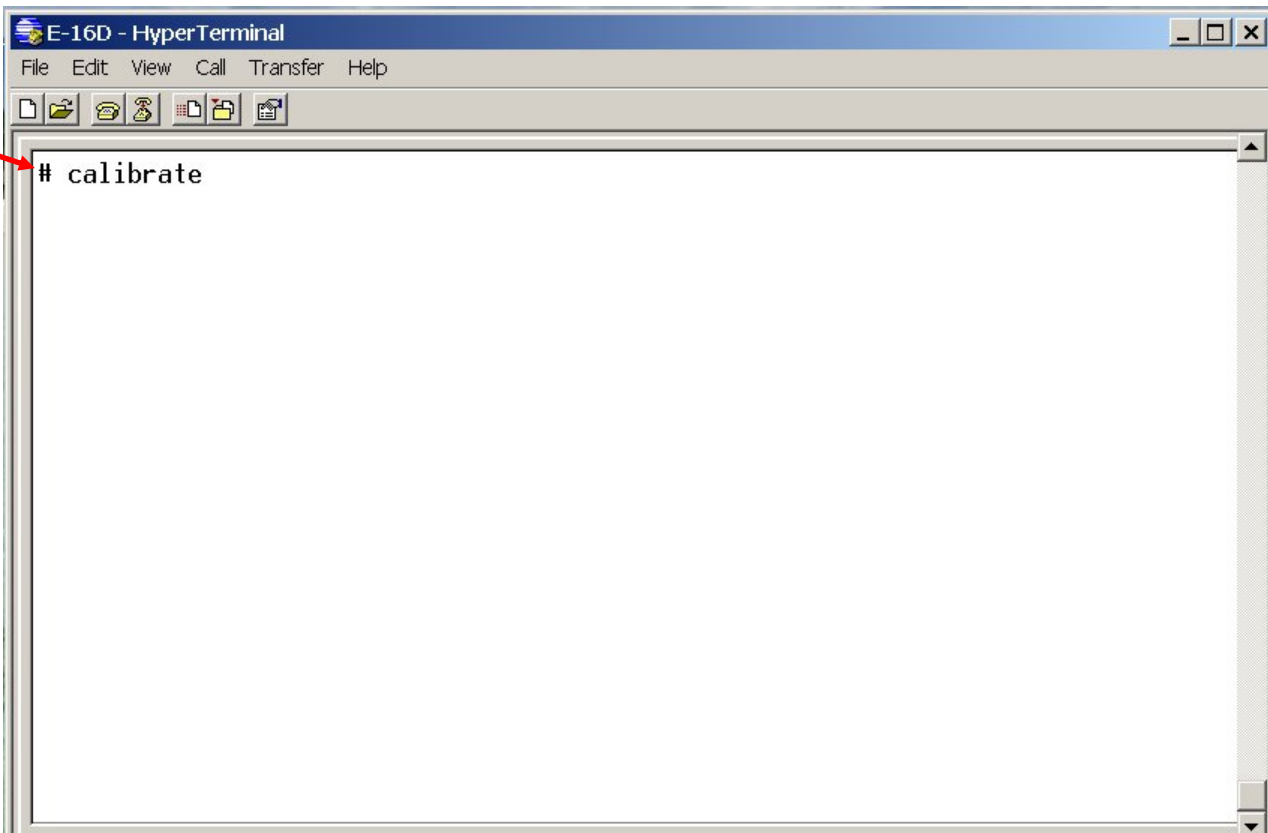
```
Network Technologies Inc      ENVIROMUX-16D      www.networktechinc.com
                               Main Menu

    1. Monitoring
    2. System Configuration
    3. Enterprise Configuration
    4. Network Configuration
    5. User Configuration
    6. Security Conlqqqqqqqqqqqqqqqqqqqqqqqqqqqqqqqqqqqqqqqqk
    7. Event & DataEnter Password: *****ash: can't access tty; job contr
ol turned offstem Informqqqqqqqqqqqqqqqqqqqqqqqqqqqqqqqqqqqqqqqqj
# clear_9. Reboot

[Logout]

Monitor and configure sensors, power outlets, and IP devices.
Press <Tab> to move between the menu and logout button.
Press <Enter> to select highlighted item.
```

10. Type "calibrate" and press <Enter>. The software will calibrate the voltage monitors.



```
E-16D - HyperTerminal
File Edit View Call Transfer Help
# calibrate
```

11. You will then be prompted to enter a humidity value. Type the humidity value you recorded in step 1 and press <Enter>.

```
# calibrate
1

Calibrating Voltage Monitors
Found expected values: 0x10c 0x000
Found current values: 0x107 0x000
Done

Current calibration offset: 1500.079590

Introduce Humidity value: 20
You introduced: 20.000000
Current reading: 20.968134
Calibration offset: 1487.608765
#
```

12. Calibration is now complete. Type "exit" and press <Enter> to return to the Main Menu.

```
# calibrate
1

Calibrating Voltage Monitors
Found expected values: 0x10c 0x000
Found current values: 0x107 0x000
Done

Current calibration offset: 1500.079590

Introduce Humidity value: 20
You introduced: 20.000000
Current reading: 20.968134
Calibration offset: 1487.608765
# exit
```