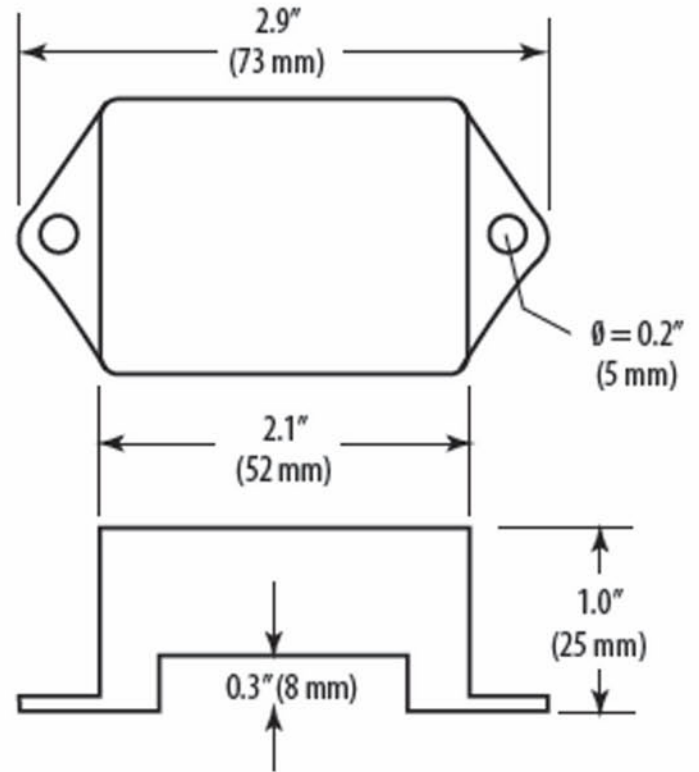
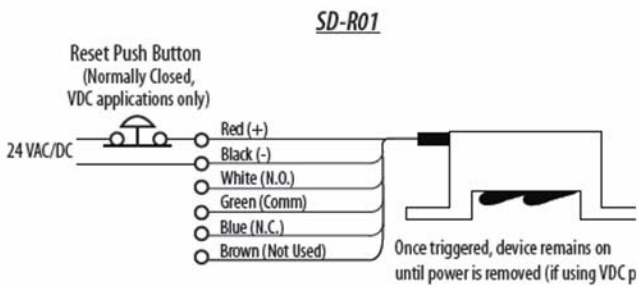




DIMENSIONAL DRAWINGS

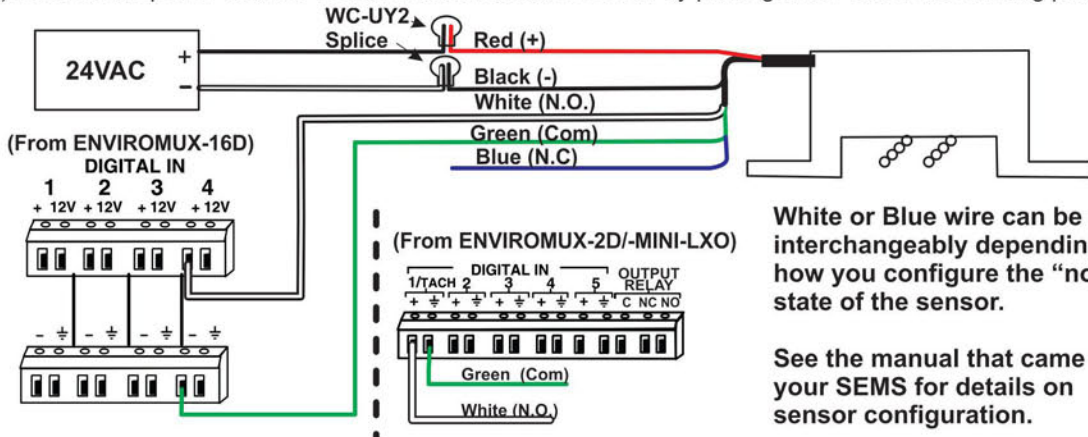


APPLICATION/WIRING DIAGRAMS



WIRING

Connect the white (N/O) and green (Com) or blue (N/C) leads to the SEMS . Connect the black (-) and red (+) leads to the power source. Test the ENVIROMUX-SLDO-14 by placing water under the sensing probes.



White or Blue wire can be used interchangeably depending on how you configure the "normal" state of the sensor.

See the manual that came with your SEMS for details on sensor configuration.