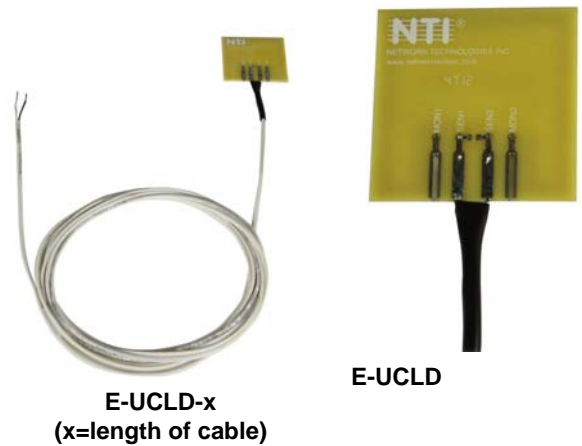


# E-UCLD-x

## Under Carpet Leak Detector

### Guide for Installation with an ENVIROMUX Enterprise Environment Monitoring System



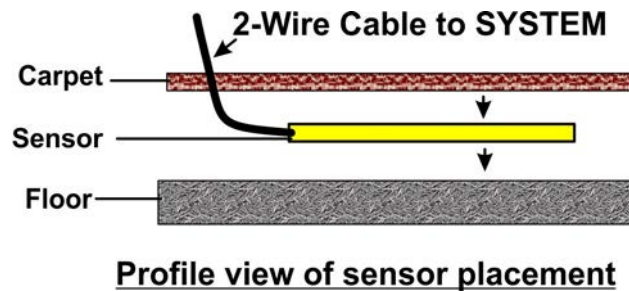
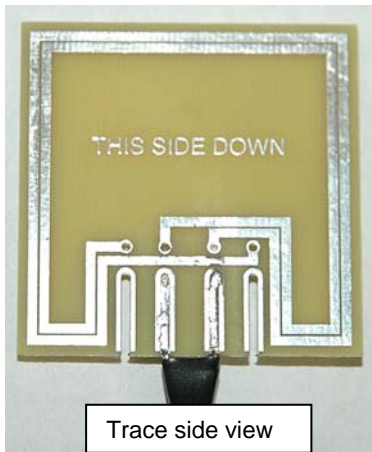
E-UCLD is an Under-Carpet Leak Detector for sensing the presence of water under carpeting or rugs in an environment where knowing moisture is present is desired. When connected to an E-SEMS-16(U), E-MINI-LXO, E-2D, E-5D or E-16D Enterprise Environment Monitoring System (SYSTEM) the sensor can be used to alert users as to the presence of water where it would otherwise be hidden.

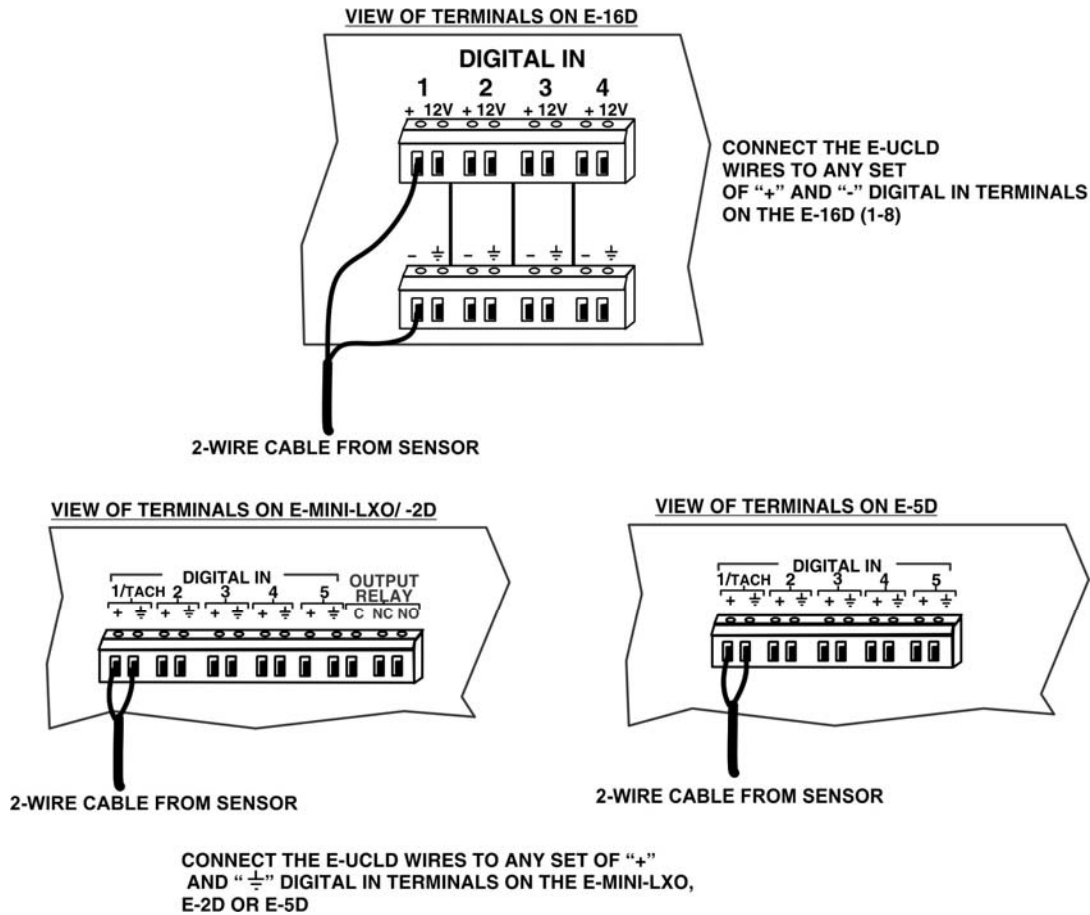
Follow the wiring diagrams below to connect the E-UCLD to a SYSTEM and then configure the SYSTEM to provide an alert response to be communicated to users using audible indication and/or report and send alert messages when moisture is sensed. An example of that configuration can be found on page 2.

Place the E-UCLD under the carpet in a location where knowledge of the presence of water is desired. Whether the sensor is trace side up or trace side down will not prevent it from sensing. The sensor position depends on what you are trying to detect and how rapidly you want it detected.

For example, if you want to sense moisture that is leaking up from the surface the carpet sits on or that migrates from another location to the location of the sensor, then placing the sensor trace side down is recommended. If you want to most rapidly sense spillage onto an area, then perhaps positioning the sensor trace side up will provide the most rapid alert results.

Run the wires to the SYSTEM, routing them away from sharp edges.





## Digital Input Configuration

Sensor Settings	
<b>Description</b>	Water Sensor <small>Descriptive name for the sensor</small>
<b>Group</b>	1 <small>Select which group the sensor belongs to</small>
<b>Normal Status</b>	Open <small>Select the normal status for the sensor</small>
<b>Refresh Rate</b>	5 Sec <small>The refresh rate at which the digital input view is updated</small>

Figure 1- Sensor configuration page from E-2D/5D/16D

When moisture is sensed, the contact status will change to Closed and if the SYSTEM is configured to send an alert message to a user or group of users, messages will be sent. For more on SYSTEM configuration, see the manual that came with your SYSTEM.

## WARRANTY INFORMATION

The warranty period on this product (parts and labor) is two (2) years from the date of purchase. Please contact Network Technologies Inc at (800) 742-8324 (800-RGB-TECH) or (330) 562-7070 or visit our website at <http://www.networktechinc.com> for information regarding repairs and/or returns. A return authorization number is required for all repairs/returns.