

E-SEMS-16/E-16D BATTERY REPLACEMENT INSTRUCTIONS

The NTI E-SEMS-16(U) and E-16D Enterprise Environment Monitoring Systems contain a sealed lead acid battery that may at some point need replacement. **If the unit is under warranty, contact NTI to arrange for return and factory replacement to prevent voiding the warranty.** If the unit is outside of the warranty, field replacement may be preferred (contact NTI to order correct battery- see chart). In either case, the failed battery must be properly disposed of. To replace the battery, carefully follow all instructions.

Note1: The E-SEMS-16/E-16D will have either E-BATTERY2 or E-BATTERY5 inside. Be sure to open the case and check before ordering. See our [website](#) or below to see images and identify which one is needed.



WARNING RISK OF ELECTRIC SHOCK! FAILURE TO FOLLOW ALL INSTRUCTIONS MAY RESULT IN ELECTRICAL SHOCK.

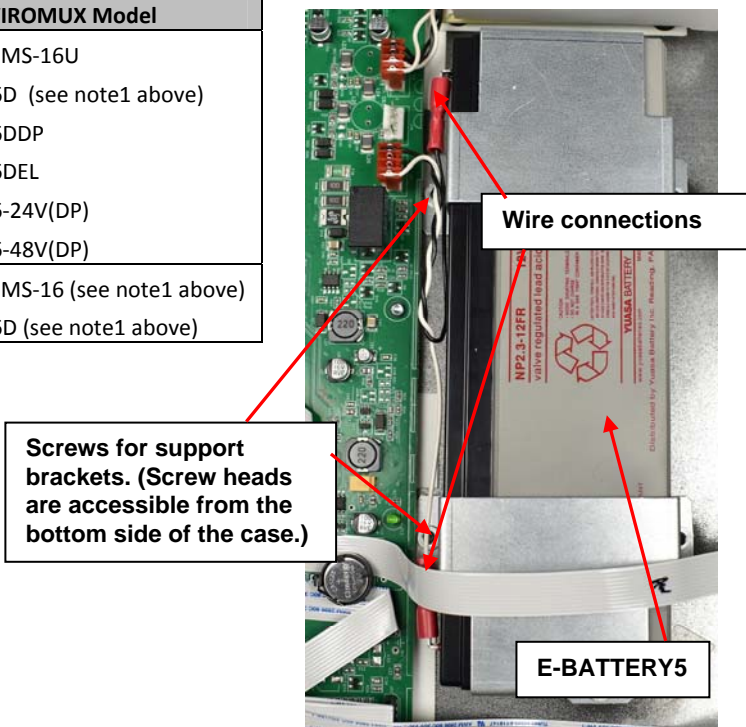
Disconnect ALL power and connection cables from the ENVIROMUX before proceeding.

1. Remove 10 Phillips-head screws securing the cover of the ENVIROMUX to expose the components inside.
2. Locate the battery inside the ENVIROMUX. (See figure below)
3. Remove the two wires connected to the battery using pliers.
4. Remove the 6 Phillips-head screws securing the two brackets holding the battery to the case. Screw heads are accessible from the bottom side of the ENVIROMUX.
5. Remove the battery.
6. Place the new battery in the case with the terminals in the same position as the battery that was removed.
7. Reinstall the two brackets to secure the battery using the 6 Phillips-head screws.
8. Attach the two wires. Be sure the wire connectors are fully on the battery terminals.
9. Reinstall the cover of the ENVIROMUX.
10. Dispose of the battery according to local requirements.

Note2: Charge new battery (power up the ENVIROMUX) for at least 48 hours before putting the ENVIROMUX in storage, and if kept in storage, recharge the battery every 3 months.

For instruction on the proper disposal of the battery, either contact the Rechargeable Battery Recycling Corporation (RBRC) at 800-822-8837 or go to their website at www.call2recycle.org. Disposal will be at no cost to you.

NTI Part #	ENVIROMUX Model
E-BATTERY2	E-SEMS-16U
	E-16D (see note1 above)
	E-16DDP
	E-16DEL
	E-16-24V(DP)
	E-16-48V(DP)
E-BATTERY5	E-SEMS-16 (see note1 above)
	E-16D (see note1 above)



E-BATTERY2

Note: E-BATTERY1 (in image below) from earlier models is obsolete but has been replaced by E-BATTERY5.

