



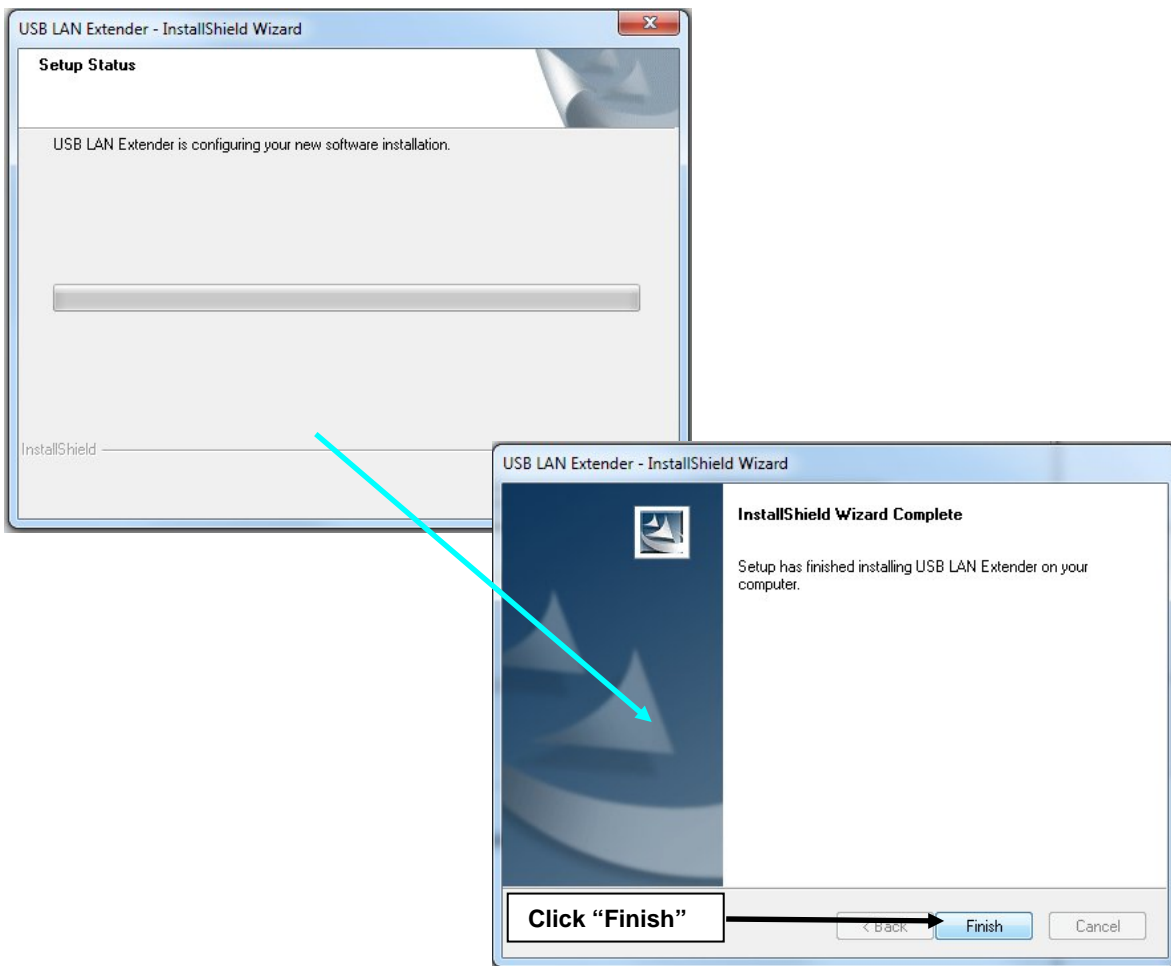
# USB2-C5-LC USB 2.0 Extender Installation Manual

These instructions are provided to provide a quick installation of the USB2-C5-LC USB 2.0 Extender. The included CD contains an application for connecting the Sender to the Receiver after the CAT5 cable has been installed between them. Drivers for the Sender and Receiver will install automatically once these components are connected.

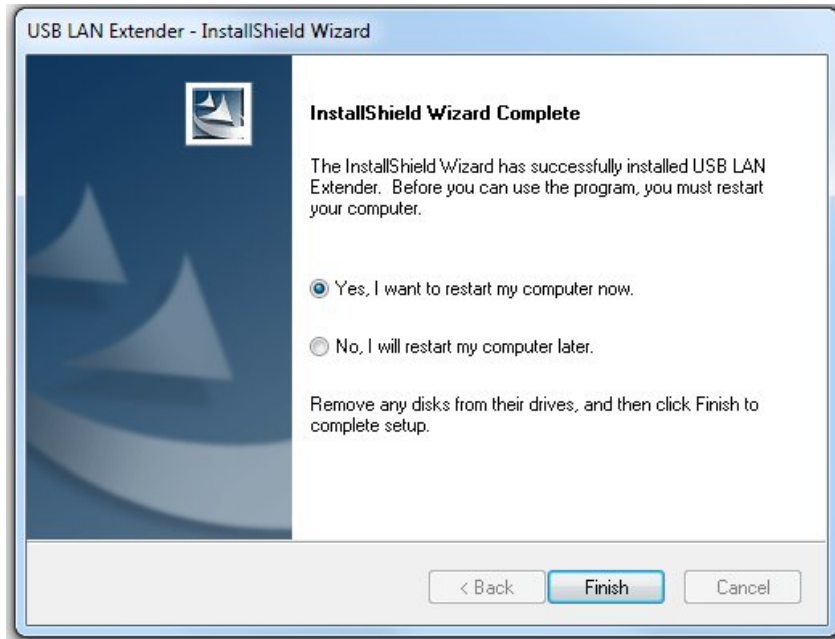
The drivers support 3 language interfaces: English, simplified Chinese and traditional Chinese. The application will display the language compatible with the operating system of the computer it is being installed on. It supports Windows XP 32 bit and 64 bit, Windows Vista 32 bit and 64 bit and Windows 7 32bit and 64 bit. Before installing applications, the firewall of the antivirus software running in the computer and the firewall that comes with the operating system should be disabled.


## Step 1: Install the Application

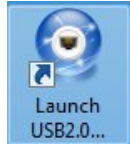
Click the install application on the CD and the following interface will appear:



Click the “Finish” button and the restart the computer interface appears:



Click the “Finish” button to complete the installation process of the application, and the computer will restart. After the computer restarts, the icon  will appear on the desktop.


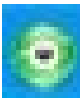


## Step 2: USB2.0 Extender #2 Driver Installation for Sender

After restarting the computer, connect the Sender to the USB port of the computer and “**Found New Hardware**” will appear in the bottom corner of the screen. Then it will change to “**Installing New Hardware**” followed by “**New Hardware is Ready to Use**”.

If a window appears calling for new hardware installation, follow the prompts to install it.

## Step 3: Driver Installation for Receiver

1. Double-click on the “Launch USB 2.0...” icon on the desktop.
2. The round portion will appear in the tray at the bottom right.  Notice the red dot. This indicates the Receiver is not connected.
3. Connect the supplied 5V power supply to the Receiver.
4. Connect the Receiver to the Sender using a CAT5 cable. If the drivers for the Receiver fail to install automatically, then you will be prompted to install them. Follow the prompts to install the drivers.
5. Once the drivers are installed, the icon will change to 

You are now ready to connect a USB device to the receiver.

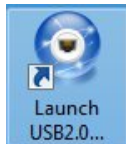
## Tips for Use

If the CAT5 cable is disconnected, you will see the message “A network cable is unplugged”.



If the extender remains connected and powered ON when the PC is powered ON, the extender will be ready to use without further action.

If the PC is powered ON without the extender connected, you will need to re-connect it and double-click the “Launch USB2.0...” icon to start the application.



## Troubleshooting

If the unit does not work after driver installation;

1. Go to the Windows Device Manager (this is accessed from the Control Panel of your Windows operating system),
2. Select “Network adapters”,
3. Right click on the device “ASIX AX88772B USB2.0 Fast Ethernet Adapter #3” and
4. Select “Update Driver Software” and follow the prompts.