

ENVIROMUX-xD Configuration Editor

The ENVIROMUX-xD Configuration Editor enables limited editing of a saved configuration file for quick loading into any ENVIROMUX-2D/5D/16D Enterprise Environment Monitoring System. The ENVIROMUX-xD configuration file contains all settings of all sensors and devices the ENVIROMUX is configured to monitor and report on. The Configuration Editor enables a saved configuration file from one ENVIROMUX-xD system to be used by another ENVIROMUX-xD system.

Fields that can be edited include:

Field	From ENVIROMUX-xD Web Interface Page:
• IPv4 Address	Network Configuration
• IPv4 Subnet Mask	Network Configuration
• IPv4 Gateway	Network Configuration
• Enterprise Name	Enterprise Configuration
• Location	Enterprise Configuration

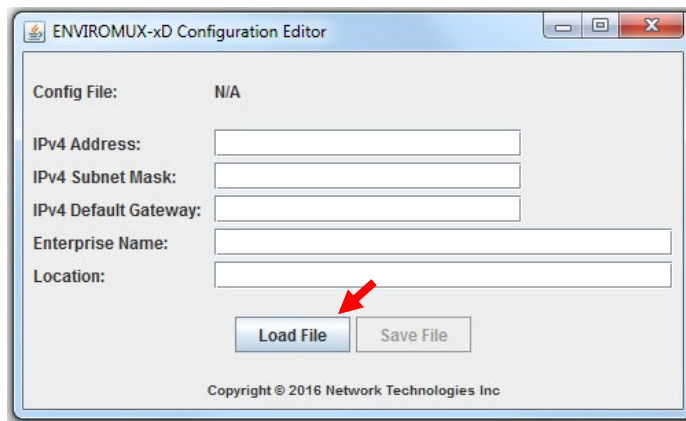
The file can then be saved with changes made thus duplicating the file for use in another ENVIROMUX system with the same sensors and devices connected.

This procedure assumes you have saved a configuration file from an ENVIROMUX-xD that contains the configuration settings you wish to use in another ENVIROMUX-xD. For instruction to save a configuration file, see the ENVIROMUX-xD manual under “System Configuration- Configuration Back up and Restore” on page 58.

Using the Configuration Editor

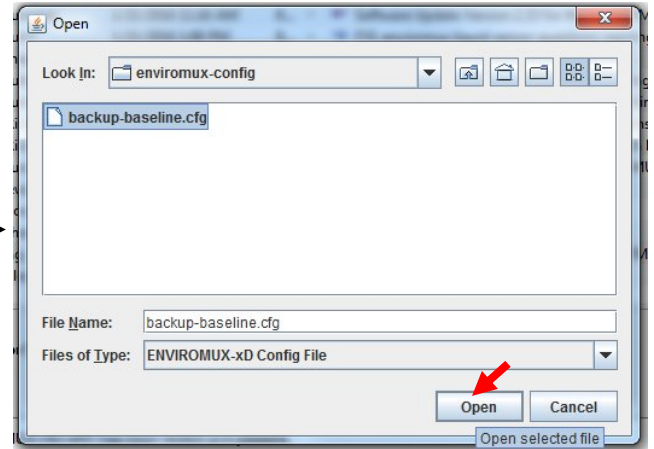
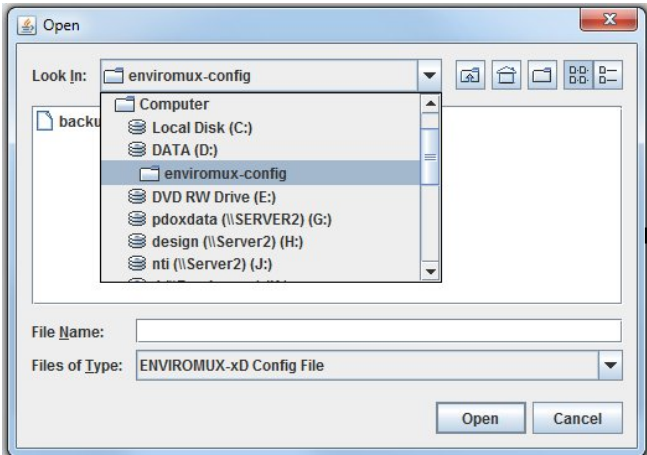
1. To open the editor, click on the `enviromux-xd-config-editor.jar` file from a Windows XP, 7, 8 or 10 PC. This file can be found at <http://www.networktechinc.com/download/d-environment-monitor-16.html>.

Note: To run the Configuration Editor, you must first have Java Runtime Environment version 1.7 or newer installed.



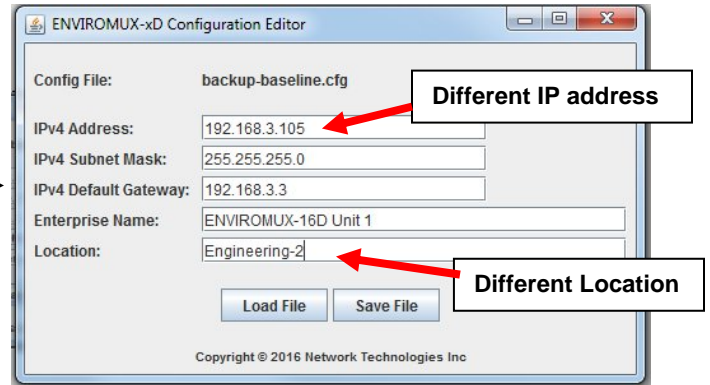
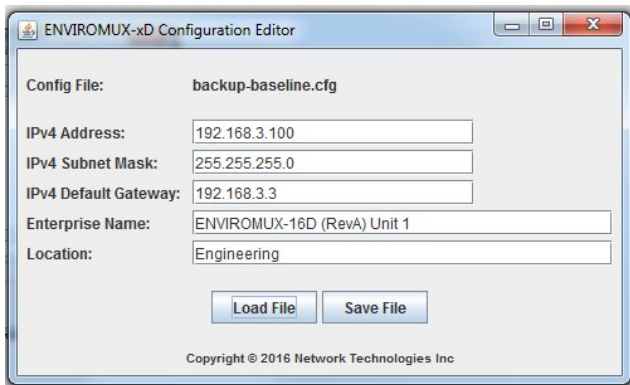
ENVIROMUX-xD Configuration Editor

2. The editor will open to the image seen above. Click on “Load File” and browse to a saved ENVIROMUX configuration file.

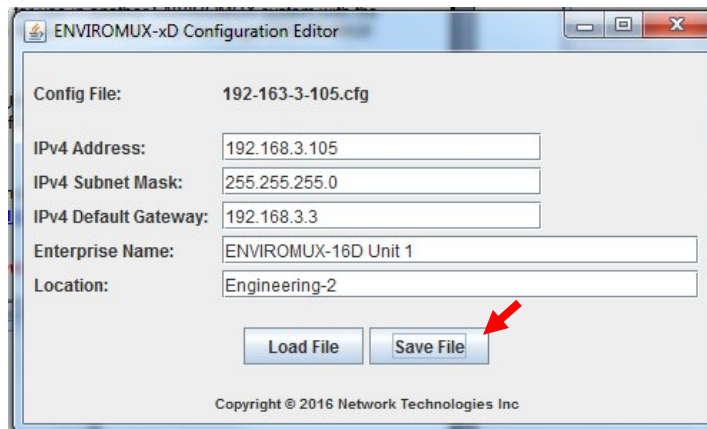


3. Select the configuration file to be edited and click **“Open”**.

4. The file will open and display the current configuration within that file. You can now edit the configuration to be used for a different ENVIROMUX-xD.

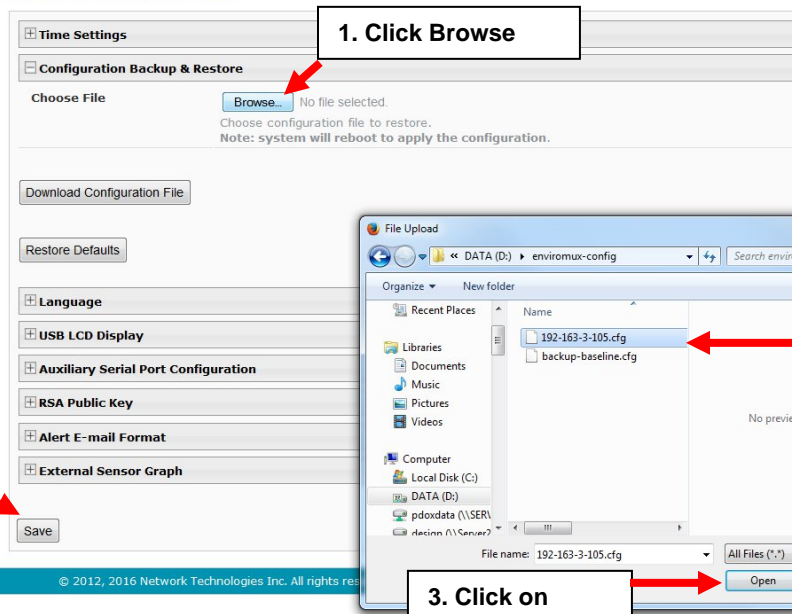


5. Once your changes have been made, click on **“Save File”**.



6. With the new file saved, open the System Configuration page of the ENVIROMUX System the file will be loaded into, and restore the new configuration file to it. 1) Click on "Choose File -> Browse, 2) browse to locate and select the new file saved, 3) click on "Open", and then 4) click on Save. The configuration file will be loaded to the ENVIROMUX System.

System Configuration



Warning: Any previous configuration or settings in the ENVIROMUX system will be replaced by the configuration and settings in the file loaded. Previous settings will be erased.

7. Wait approximately 1 minute before trying to login to the ENVIROMUX system with the new configuration.