

INTELLIGENT POWER DISTRIBUTION CONTROL UNITS

Monitor and manage power over IP.
Remotely reboot servers, routers, web cams, firewalls and other remote devices.



IPDU-SW-15A-515-8H



IPDU-SW-20A-520-24V

Features & Applications

The ENVIROMUX® Intelligent Power Distribution Control Units allow you to remotely reboot and control power (on/off) to servers and network devices, and monitor voltage and current. They consist of 8, 16, or 24 NEMA outlets with capacities of 15A, 20A or 30A and install in a horizontal or vertical configuration to save valuable rack space for highly dense data center environment.

- Provides individual on/off control of AC power receptacles.
- Remote power monitoring of both voltage and current.
- Remotely connect to a device to get real time information and perform control functions.
- Outlets can be controlled through the web interface.
- Front panel display shows current draw of connected equipment.
- Audible alarm signals current threshold warning and current overload.
- Vertical enclosure occupies Zero RU rack space. It mounts on the back rails or in the cavity space of the cabinet.
- Horizontal enclosure occupies 1 RU rack space.
- Detachable mounting brackets allow for several mounting options.
- Power Up Sequencing controls which equipment is powered up or down to avoid in-rush current.

Specifications

Power

- Voltage: 115VAC
- AC Capacity: Models available in 15A, 20A, or 30A. See chart below for details.
- Input Connector: Models available in NEMA 5-15p, NEMA 5-20p, or NEMA L5-30P on 10' power cable.
- Output Connectors: Models available in NEMA 5-15r or NEMA 5-20r.

Protocols

- HTTP, SNMP, TCP/IP, DHCP
- Operates and configures via HTTP/HTTPS web page interface, or included utility software.
- Alerts are sent using email or SNMP traps when any monitored current condition exceeds a user-specified range.
 - Alerts and power data are posted in message log, which is accessible through Web user interface. The log can be downloaded as a CSV file.

Dimensions

- WxDxH (in.):
 - IPDU-SW-15A-515-8H: 17x3.5x1.7
 - IPDU-SW-20A-520-8H: 17x3.5x1.7
 - IPDU-SW-15A-515-8V: 1.5x23x2.2
 - IPDU-SW-20A-520-8V: 1.5x23x2.2
 - IPDU-SW-20A-520-16V: 2.2x49x1.7
 - IPDU-SW-30A-520-16V: 2.2x49x1.7
 - IPDU-SW-20A-520-24V: 2.2x70x1.7
 - IPDU-SW-30A-520-24V: 2.2x70x1.7

Environmental

- Operating temperature: 32°F to 104°F (0°C to 40°C).
- Storage temperature: -13°F to 149°F (-25°C to 65°C).
- Operating and Storage Relative Humidity: 0 to 90% non-condensing RH.

Regulatory Approvals

- CE, FCC, RoHS



INTELLIGENT POWER DISTRIBUTION CONTROL UNITS

Monitor and manage power over IP.
Remotely reboot servers, routers, web cams, firewalls and other remote devices.

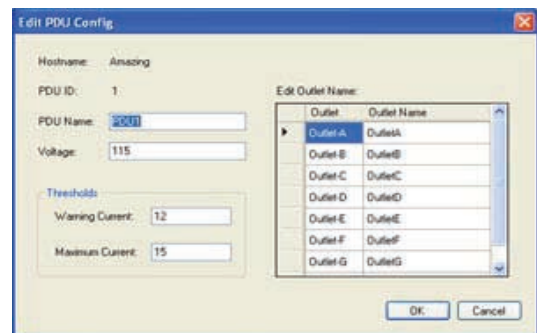
Control Methods

User Interface

- Web interface provides a graphic control interface through a web browser (IE, Netscape, Mozilla).
 - SNMP allows read/write capability with trapping.
 - User name/password security.
 - Change or update usernames and passwords.
 - E-mail notification allows up to three e-mail addresses to receive notifications of alerts or events.
 - Outlet control includes individual, group and all outlet global control.
 - In the "control" section, select outlets by checking the box to the right of the outlet name. Enter the username and password below and check on or off to change status.
- Utility Software interface provides additional control options.
 - Administrator and multiple users can be configured.
 - User level access can be limited to read only or read/write.
 - Unit and outlet names can be configured.
 - View entries stored in the events or data log.
 - Power consumption chart records current and kilowatt-hour usage, can be filtered by day, month, or custom time frame.

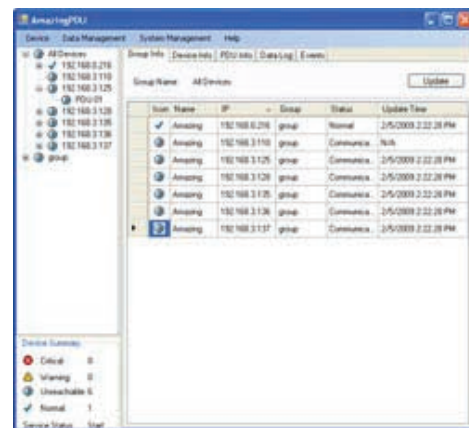
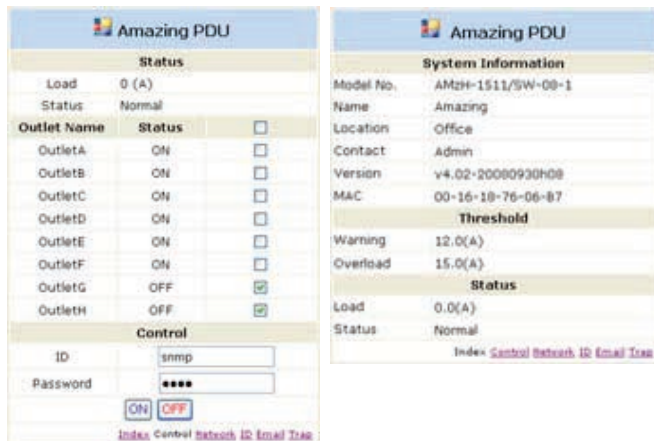
- Two digit display with corresponding LED indicator
 - Displays current from 0-20 amps with true RMS accuracy.
 - Displays IP address of unit.
- One LED indicator per outlet (most models)
 - Light illuminates when the outlet power is on.
- Function button controls network connectivity.

Screenshot of utility software



Front Panel Interface

Screenshot of web interface



Intelligent Power Distribution Units					
NTI Part #	Rack Units	Capacity	Input	Output	Circuit Breakers
IPDU-SW-15A-515-8H	1RU	15A	NEMA 5-15p	8 x NEMA 5-15r	1
IPDU-SW-20A-520-8H	1RU	20A	NEMA 5-20p	8 x NEMA 5-20/15r	1
IPDU-SW-15A-515-8V	0RU	15A	NEMA 5-15p	8 x NEMA 5-15r	1
IPDU-SW-20A-520-8V	0RU	20A	NEMA 5-20p	8 x NEMA 5-20/15r	1
IPDU-SW-20A-520-16V	0RU	20A	NEMA 5-20p	16 x NEMA 5-20/15r	1
IPDU-SW-30A-520-16V	0RU	30A	NEMA L5-30p	16 x NEMA 5-20/15r	2
IPDU-SW-20A-520-24V	0RU	20A	NEMA 5-20p	24 x NEMA 5-20/15r	1
IPDU-SW-30A-520-24V	0RU	30A	NEMA L 5-30p	24 x NEMA 5-20/15r	3



330.562.1999
Worldwide fax



sales@ntigo.com



www.networktechinc.com

© 2007, 2009 NTI
All rights reserved